

27 PEMBROKE COURT

TWO BEDROOM
APARTMENT

£649,950
(other fees apply)

It can only be Audley.



27 Pembroke Court is a beautifully appointed two bedroom apartment, south-west facing and with dual aspect. Situated on the second floor and conveniently located for the main house where you will find the restaurant, bar bistro, library, lounge and health spa.

The space is light and airy with balcony accessed from your living room.

Property specifications:

- Views over woodland from living room, kitchen and balcony
- Fully fitted Villeroy and Boch En suite shower room and guest bathroom
- Lift access to underground car park
- SieMatic fully fitted kitchen with integrated appliances: fridge/freezer, washer drier, dishwasher and double oven with microwave
- Underfloor heating

Fees

Monthly Management Fee: £1145.46

Annual ground rent: £500

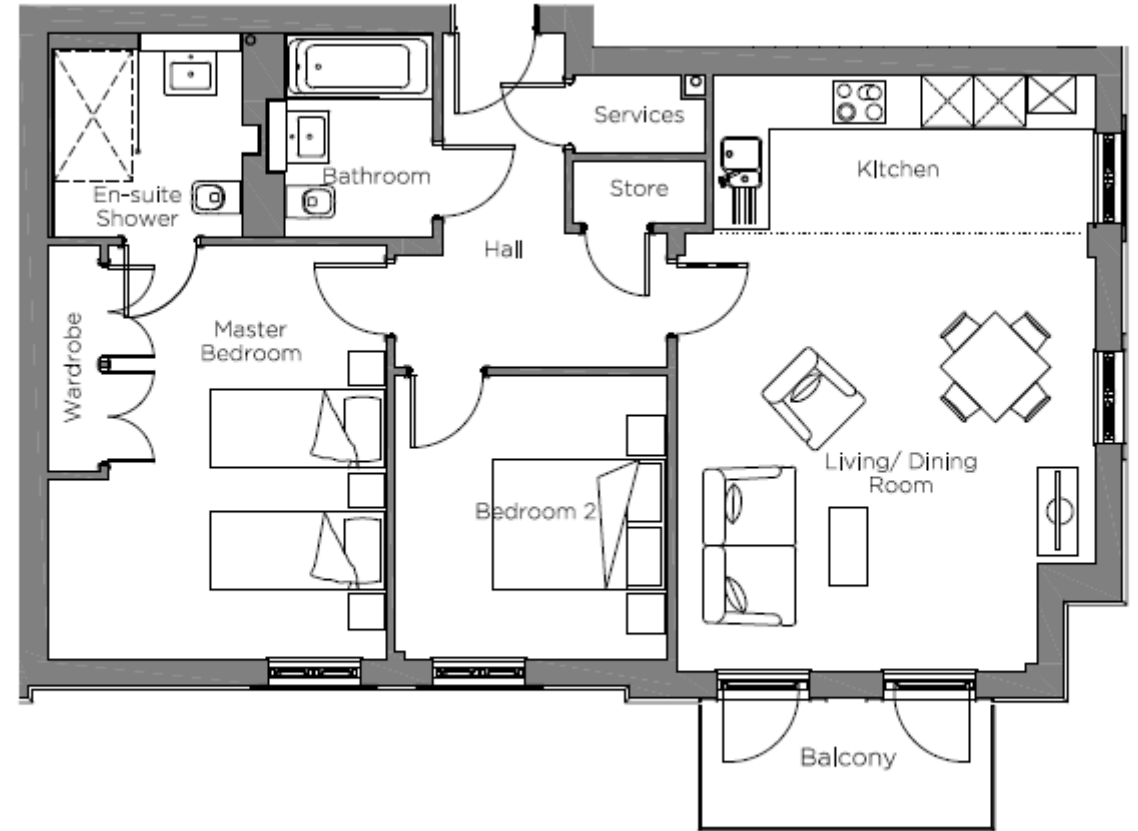
Council Tax Band: F

A deferred management charge applies to this property, please ask the sales team for more information.

Viewing by appointment with the sales office.
01753 201 305
coopersales@audleyvillages.co.uk



Internal Measurements	Metric (m)	Imperial (ft)
Kitchen/Living/Dining Room	6.89 X 4.84	22'7 X 15 '10
Main Bedroom	4.76 X 3.90	15'8 X 12'10
Bedroom 2	3.26 X 3.15	10'9 X 10'4
Balcony	3.34 X 1.49	11'0 X 4'11



Built in wardrobes in bedrooms have not been included in the overall dimensions. Maximum measurements shown.

Furniture shown to illustrate possible room layouts and not included in sale. July 2024

Score	Energy rating	Current	Potential
92+	A		
81-91	B	85 B	85 B
69-80	C		
55-68	D		
39-54	E		
21-38	F		
1-20	G		

