

# TWO BEDROOM, THIRD FLOOR APARTMENT

**15 Austin Court, Plot 77. Audley Ellerslie**  
**Abbey Road, Malvern, Worcestershire WR14 3HL**  
**01684 438 400**

## Property specifications:

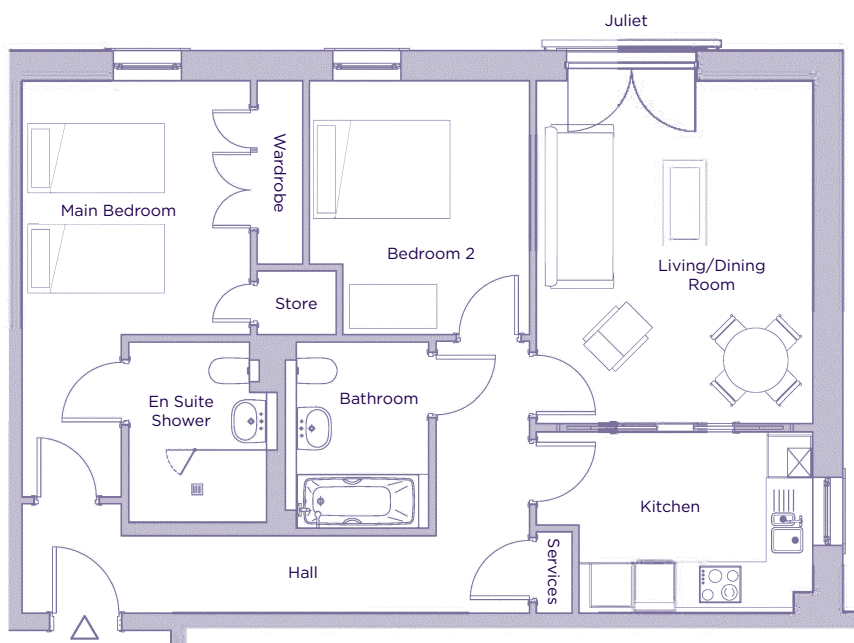
- Main bedroom with fitted wardrobes and en suite shower room
- Second double bedroom
- Guest bathroom
- Spacious living/dining room with Juliet balcony
- SieMatic kitchen with integrated appliances
- Hallway storage
- Lift access
- Carpeted and decorated throughout
- Audley Club membership

Please see the Village brochure and Key Facts for further information.

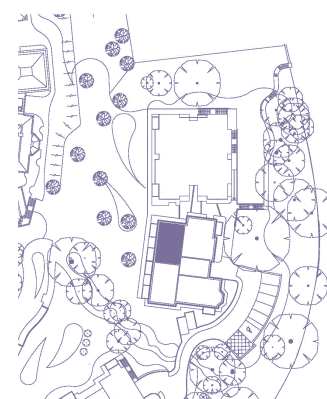


# THE LAYOUT

**15 Austin Court, Plot 77. Audley Ellerslie  
Abbey Road, Malvern, Worcestershire WR14 3HL**



Internal Measurements	Metric (m)	Imperial (ft)
Living/dining room	4.78 X 3.85	15'8" X 12'8"
Kitchen	3.26 X 2.53	10'8" X 8'4"
Main bedroom	3.54 X 3.18	11'7" X 10'5"
Bedroom 2	3.54 X 3.07	11'7" X 10'1"



These floorplans are illustrative and for marketing purposes only. Maximum measurements are shown. Wardrobes not included in the overall room dimensions. Furniture shown to illustrate possible room layouts and not included in sale. Designs vary according to plot. All details should be checked at the Sales Office. 25 September 2017.