

TWO BEDROOM, SECOND FLOOR APARTMENT

12 Earle House, Plot 70. Audley Fairmile,
Fairmile Lane, Cobham KT11 2BU
01932 366 139

Property specifications:

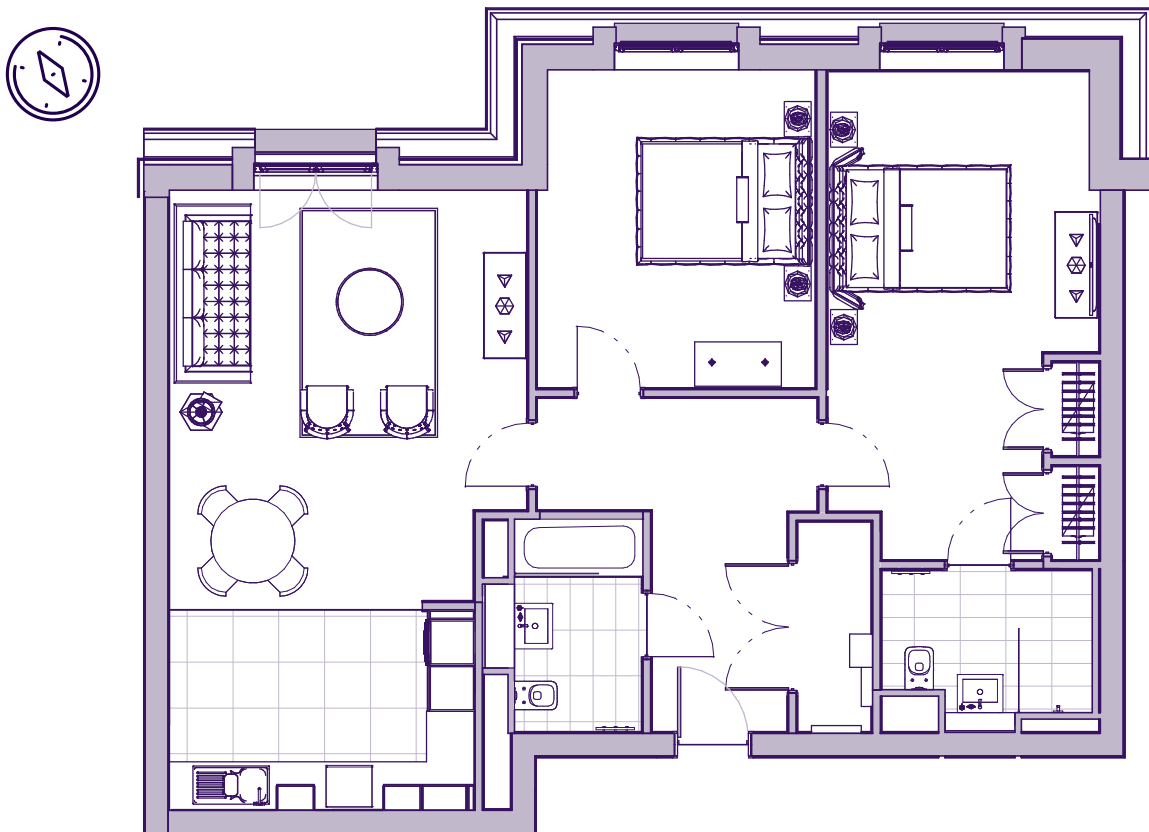
- Ample storage throughout
- Open plan kitchen/living/dining room
- Lift access to the second floor
- Near to the restaurant and Audley Club facilities
- Luxury integrated SieMatic kitchen with Neff appliances
- Main bedroom with built-in wardrobes and en suite shower room with Villeroy & Boch sanitaryware
- Spacious second bedroom

Please see the village brochure and key facts for further information.



THE LAYOUT

**12 Earle House, Plot 70. Audley Fairmile,
Fairmile Lane, Cobham KT11 2BU**



Internal Measurements	Metric (m)	Imperial (ft)
Living/dining room	5.49 x 4.70	18'0" x 15'5"
Kitchen	2.63 x 4.00	8'7" x 13'1"
Main bedroom	6.43 x 3.61	21'1" x 11'10"
Bedroom two	4.18 x 3.70	13'9" x 12'2"



These floor plans are illustrative and for marketing purposes only. Maximum measurements are shown with longer dimension quoted first. Dimensions are quoted for the main area of the room only. Built-in wardrobes not included in the overall room dimensions. Furniture shown to illustrate possible room layouts and not included in sale. Designs vary according to plot. All details should be checked at the Sales Office. October 2021.