

TWO BEDROOM, SECOND FLOOR APARTMENT

11 Crosley Court, Plot 20. Audley Sunningdale Park,
Silwood Road, Ascot, Berkshire SL5 0QB
01344 859 239

Property specifications:

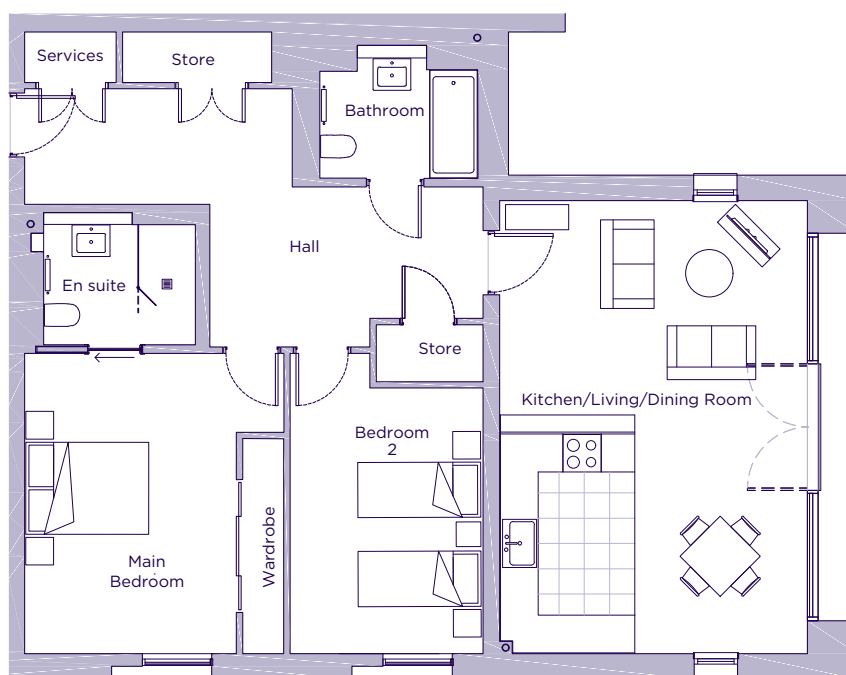
- New-build apartment on the second floor
- Juliet balcony in the living room
- Main bedroom with large built-in wardrobe
- Fully integrated SieMatic kitchen with Neff appliances
- Luxury Villeroy & Boch guest bathroom
- En suite shower room in main bedroom, with space-saving sliding door
- Hallway storage
- Life access
- Carpeted and decorated throughout

Please see the village brochure and key facts for further information.

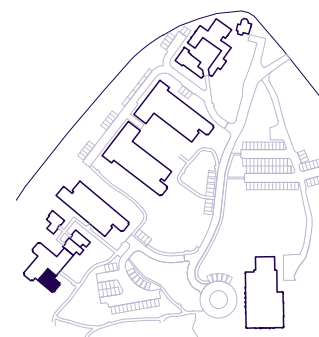


THE LAYOUT

**11 Crosley Court, Plot 20. Audley Sunningdale Park,
Silwood Road, Ascot, Berkshire SL5 0QB**



Internal Measurements	Metric (m)	Imperial (ft)
Kitchen/Living/Dining Room	7.17 x 4.87	23'6" x 16'0"
Main Bedroom	4.66 x 3.37	15'3" x 11'1"
Bedroom 2	4.06 x 2.88	13'4" x 9'5"



These floor plans are illustrative and for marketing purposes only. Maximum measurements are shown with longer dimension quoted first. Dimensions are quoted for the main area of the room only. Built-in wardrobes not included in the overall room dimensions. Furniture shown to illustrate possible room layouts and not included in sale. Designs vary according to plot. All details should be checked at the Sales Office. June 2021.