

TWO BEDROOM, SECOND FLOOR APARTMENT

12 Watercroft Place, Plot 96. Audley Wycliffe Park,
Bigmore Lane, Horsleys Green, Buckinghamshire HP14 3XL
01494 324 966

Property specifications:

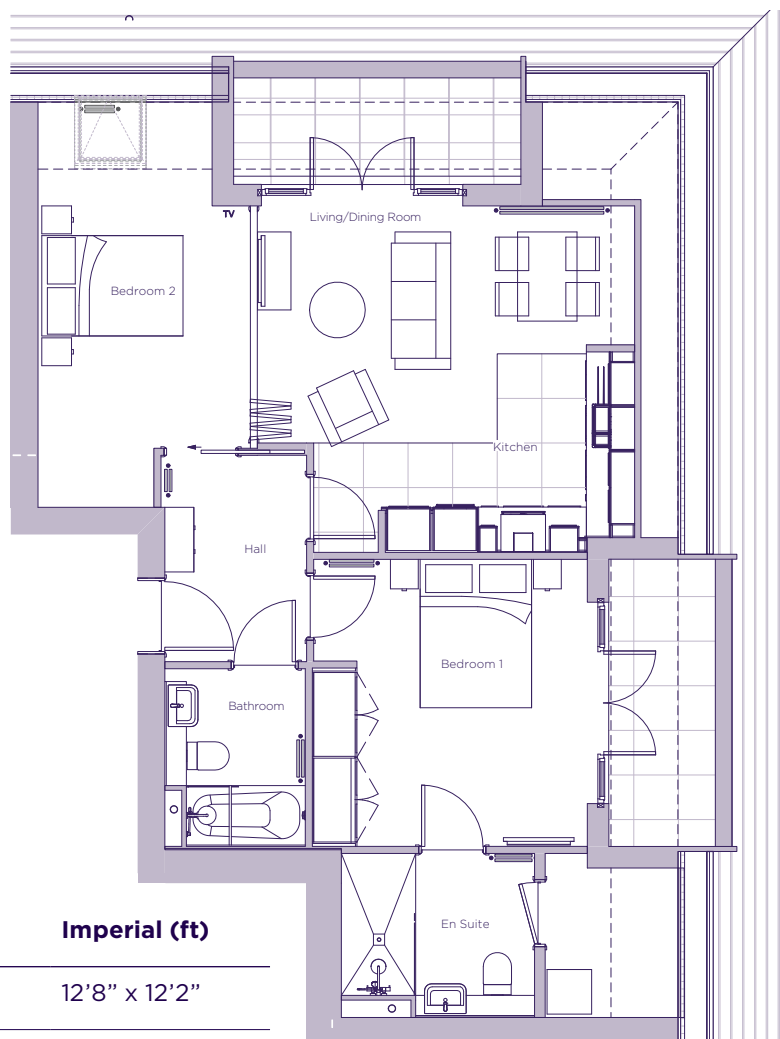
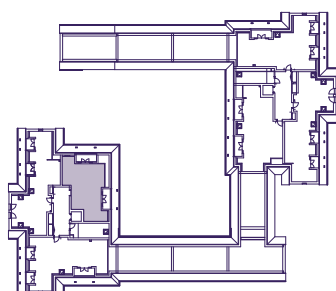
- Second floor/penthouse apartment with lift access
- Open plan kitchen/dining room with private balcony
- Nobilia kitchen with integrated Neff appliances
- Concertina folding doors between the kitchen/dining room and bedroom two/study for flexible living
- Fitted wardrobes in the main bedroom and en suite shower room with additional built-in storage

Please see the village brochure and key facts for further information.



THE LAYOUT

**12 Watercroft Place, Plot 96. Audley Wycliffe Park,
Bigmore Lane, Horsleys Green, Buckinghamshire HP14 3XL**



Internal Measurements	Metric (m)	Imperial (ft)
Bedroom 1	3.86 x 3.70	12'8" x 12'2"
Bedroom 2	5.45 x 2.86	17'11" x 9'4"
Kitchen	2.70 x 3.36	8'10" x 11'0"
Living/dining room	1.96 x 5.08	6'5" x 16'8"
Services	2.01 x 1.79	6'7" x 5'10"
Terrace (approx)	1.43 x 3.87	4'8" x 12'8"
Terrace (approx)	3.87 x 1.43	12'8" x 4'8"

These floor plans are illustrative and for marketing purposes only. Maximum measurements are shown with longer dimension quoted first. Dimensions are quoted for the main area of the room only. Built-in wardrobes not included in the overall room dimensions. Furniture shown to illustrate possible room layouts and not included in sale. Designs vary according to plot. All details should be checked at the Sales Office. November 2021.