

20 Alexander Court



20 Alexander Court

Two bedroom apartment

A first floor, dual-aspect apartment with two double bedrooms. The main bedroom benefits from an en suite shower room and a west-facing Juliette balcony and both rooms are fitted with wardrobes. There is an additional bathroom accessed via the hallway. The separate kitchen includes SieMatic appliances, and the living room features a fireplace and a second Juliet balcony.

Property specifications

- Main bedroom with en suite and built-in wardrobes
- Spacious living/dining room with Juliet balcony and fireplace
- Family/guest bathroom
- Allocated parking space
- Lift access
- Close proximity to Main House facilities
- Fully integrated SieMatic kitchen with fridge, freezer, oven, microwave and dishwasher

Guide Price £400,000 (other fees apply)

Monthly management fee £1025.02

Annual ground rent £500

Bistro credit: £83.63

A deferred management charge applies to this property, please ask the sales team for more information.

Council Tax Band: E

Viewing by appointment with the sales office.

01622 737 279

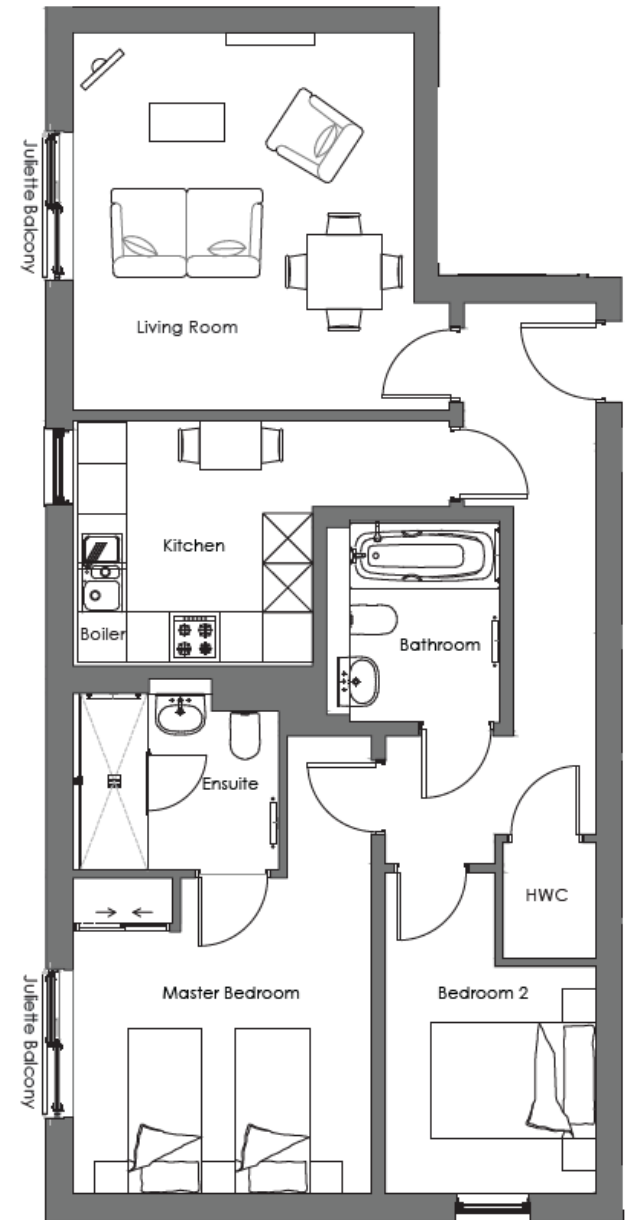
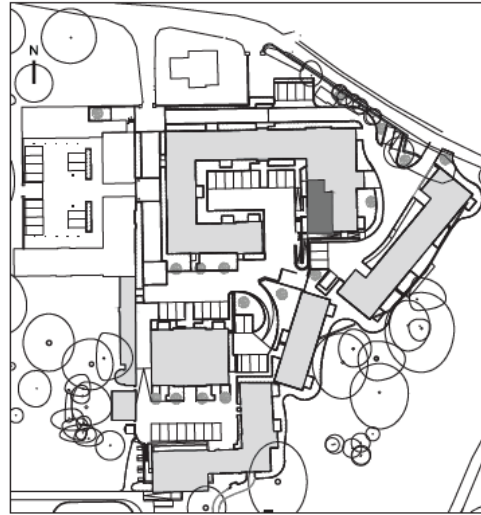
motesales@audleyvillages.co.uk



20 Alexander Court

Internal Measurements	Metric (m)	Imperial (ft)
Living Room	4.57 x 4.12	15' x 13'6"
Kitchen	2.97 x 2.89	9'9" x 9'6"
Main Bedroom	3.82 x 3.61	12'7" x 11'10"
Bedroom 2	3.89 x 2.55	12'9" x 8'4"
Bathroom	2.44 x 1.81	8' x 5'11"
En suite	2.40 x 2.13	7'10" x 7'
Total Sq.Ft: 883		

Built in wardrobes in bedrooms have not been included in the overall dimensions. Maximum measurements shown.



Score	Energy rating	Current	Potential
92+	A		
81-91	B	84 B	84 B
69-80	C		
55-68	D		
39-54	E		
21-38	F		
1-20	G		

Furniture shown to illustrate possible room layouts and not included in sale. Designs vary according to plot and all details should be checked at the Sales office. March 2024

