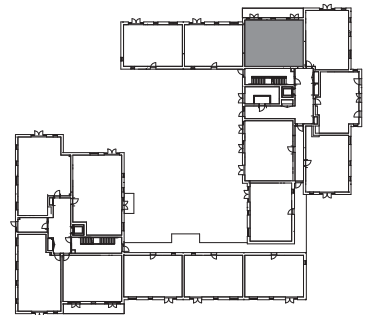
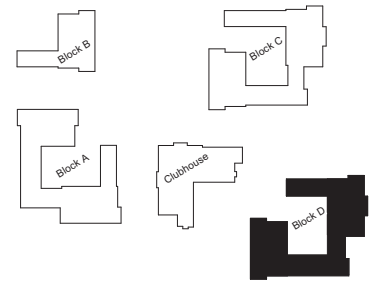
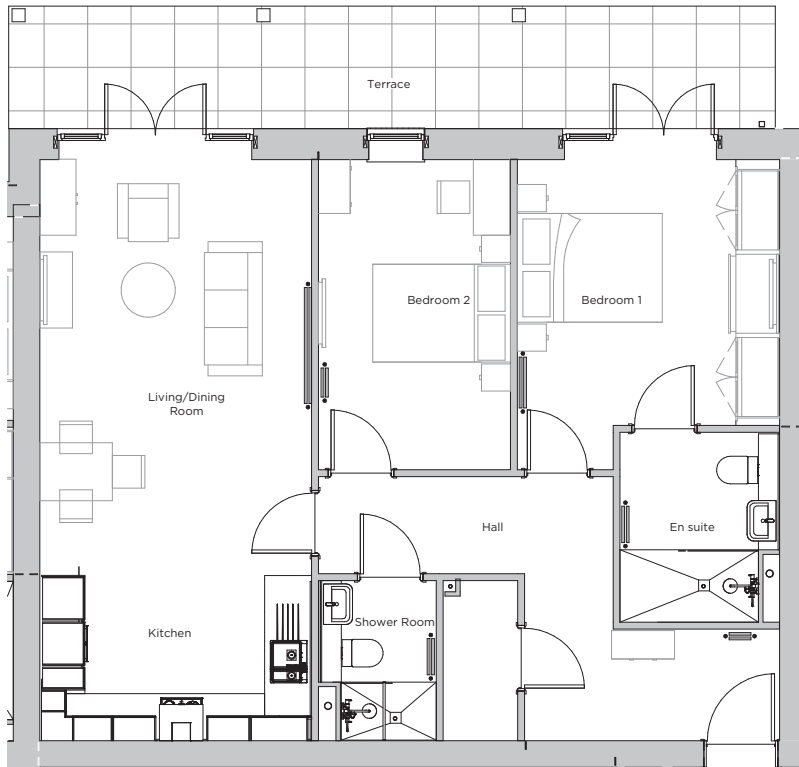


# Audley Wycliffe Park

15 Beckings Court (D10)  
Ground Floor Apartment  
Plot 109



## Internal Measurements

	Metric (m)	Imperial (ft)
Bedroom 1	3.67 x 3.62	12'0" x 11'10"
Bedroom 2	4.28 x 2.65	14'0" x 8'8"
Kitchen	2.29 x 3.75	7'6" x 12'4"
Living/Dining Room	5.73 x 3.75	18'9" x 12'4"
Services	2.21 x 1.03	7'3" x 3'5"
Terrace	1.65 x 10.54	5'5" x 34'7"

Audley Wycliffe Park  
Bigmore Lane, Horsleys Green,  
Buckinghamshire HP14 3XL  
01494 324 966  
[www.audleyvillages.co.uk](http://www.audleyvillages.co.uk)

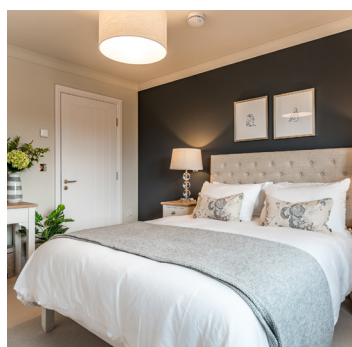
These floor plans are illustrative and for marketing purposes only. Furniture shown to illustrate possible room layouts and not included within the sale. Designs vary according to plot. All details should be checked at the Sales Office.

A: 10 November 2021 C: 211126



# Audley Wycliffe Park

2 bedroom, ground floor apartment



## Property highlights

- Balcony accessible from the living room and main bedroom
- Open plan kitchen/living room with dining area
- Modern fully fitted Nobilia kitchen with Neff appliances
- Double second bedroom
- En suite and guest bathroom fitted with Villeroy & Boch sanitaryware
- Main bedroom has fitted wardrobes and en suite shower
- Hallway storage
- Carpeted and decorated throughout
- Membership to the Audley Club



Audley Wycliffe Park  
Bigmore Lane, Horsleys Green,  
Buckinghamshire HP14 3XL  
01494 324 966  
[www.audleyvillages.co.uk](http://www.audleyvillages.co.uk)

CGIs & Photos for illustration purposes only

