

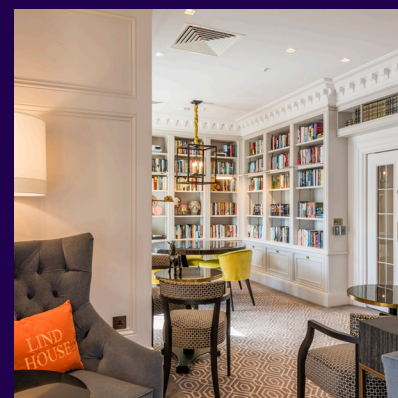
TWO BEDROOM, SECOND FLOOR APARTMENT

10 Mason Court, Plot 49. Audley Ellerslie
Abbey Road, Malvern, Worcestershire WR14 3HL
01684 438 400

Property specifications:

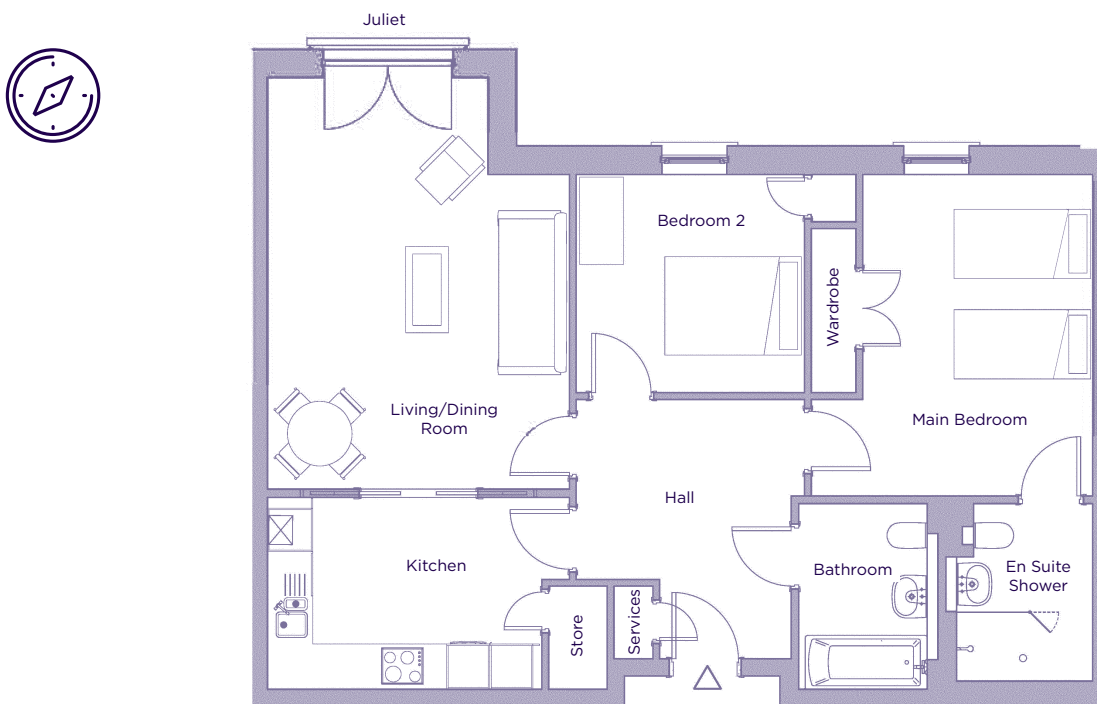
- Large double bedroom with en suite shower room and built-in wardrobes
- Second double bedroom
- Modern SieMatic kitchen with integrated appliances
- Juliet balcony in living room
- Pocket sliding doors between the kitchen and living/dining room for optional open plan living
- Luxury Villeroy & Boch sanitaryware and Hansgrohe fittings
- Generous storage cupboards

Please see the Village brochure and Key Facts for further information.



THE LAYOUT

**10 Mason Court, Plot 49. Audley Ellerslie
Abbey Road, Malvern, Worcestershire WR14 3HL**



| Internal Measurements | Metric (m) | Imperial (ft) |
|-----------------------|-------------|-----------------|
| Living/dining room | 4.21 X 5.73 | 13'10" x 18'10" |
| Kitchen | 3.82 X 2.67 | 12'7" X 8'9" |
| Main bedroom | 3.20 X 4.48 | 10'6" X 14'8" |
| Bedroom 2 | 3.18 X 3.04 | 10'5" X 10'0" |



These floorplans are illustrative and for marketing purposes only. Maximum measurements are shown. Wardrobes not included in the overall room dimensions. Furniture shown to illustrate possible room layouts and not included in sale. Designs vary according to plot. All details should be checked at the Sales Office. 25 September 2017.