

11 Gallop Place



11 Gallop Place

A well-presented, second floor apartment with two double bedrooms, balcony and attractive views. The main bedroom benefits from double fitted wardrobes and an en-suite shower room with walk in rainfall shower and Villeroy & Boch sanitaryware. There is an additional bathroom with shower over the bath. The open plan kitchen includes integrated appliances a large dining area with tiled floor and underfloor heating.

Property specifications:

- South-east facing top floor apartment
- Open plan living with French door leading to balcony
- Two double bedrooms, including en suite to main bedroom with fitted Villeroy & Boch sanitary ware.
- Modern kitchen with integrated appliances including fridge, freezer, combination oven, Slide & Hide Circo Therm oven, dishwasher and washer dryer.

Guide Price £550,000.00 (other fees apply)

Monthly management fee: Option 1 - £1010.86

Ground rent £500 per annum

Council Tax Band: D

A deferred management charge applies to this property, please ask the sales team for more information

Viewing by appointment with the sales office.

01794 278303

stanbridgesales@audleyvillages.co.uk



11 Gallop Place

Internal Measurements

Living room and kitchen

Metric (m)

7.07 x 4.36

Imperial (ft)

23'2" x 14'4"

Main Bedroom

4.86 x 3.11

15'11" x 10'2"

Bedroom 2

3.61 x 2.82

11'10" x 9'3"

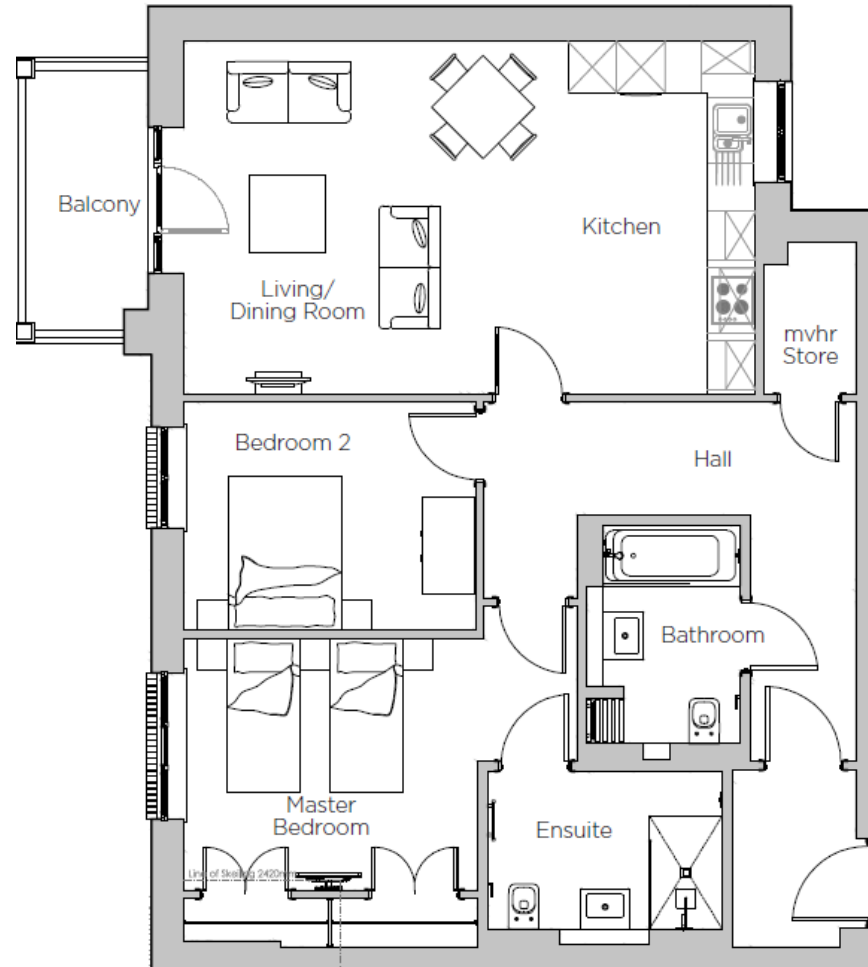
Balcony

3.21 x 1.50

10'6" x 4'11"

Total Sq.Ft : 1,058

Built in wardrobes in bedrooms have not been included in the overall dimensions. Maximum measurements shown.



Score	Energy rating	Current	Potential
92+	A		
81-91	B	83 B	83 B
69-80	C		
55-68	D		
39-54	E		
21-38	F		
1-20	G		

Furniture shown to illustrate possible room layouts and not included in sale. Designs vary according to plot and all details should be checked at the Sales office. March 2024

