

TWO BEDROOM, GROUND FLOOR APARTMENT

**4 Mackenzie Place, Plot 10. Audley Sunningdale Park,
Silwood Road, Ascot, Berkshire SL5 0QB
01344 859 239**

Property specifications:

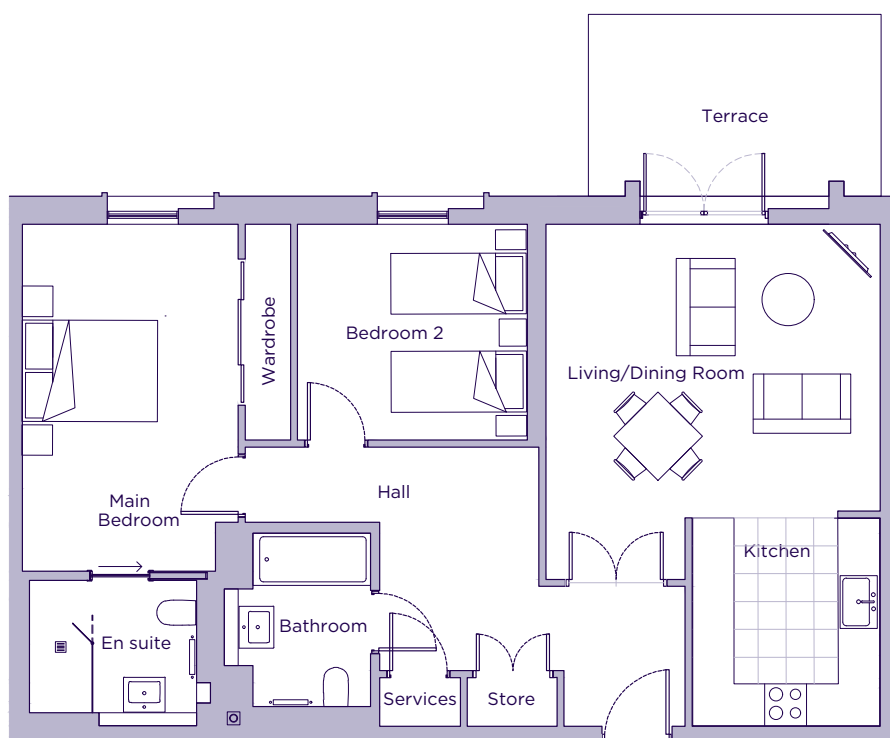
- New-build apartment on the ground floor
- Terrace accessed from the living room
- Fully integrated SieMatic kitchen with Neff appliances
- Main bedroom with large built-in wardrobe
- En suite shower room in main bedroom
- Luxury Villeroy & Boch bathrooms
- Carpeted and decorated throughout
- Membership to the Audley Club

Please see the village brochure and key facts for further information.

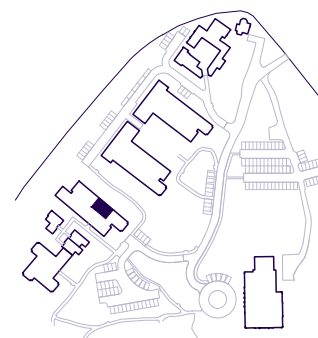


THE LAYOUT

**4 Mackenzie Place, Plot 10. Audley Sunningdale Park,
Silwood Road, Ascot, Berkshire SL5 0QB
01344 859 239**



Internal Measurements	Metric (m)	Imperial (ft)
Living/Dining Room	4.80 x 4.22	5'9" x 13'10"
Kitchen	2.99 x 2.70	9'10" x 8'10"
Main Bedroom	4.99 x 3.10	16'4" x 10'2"
Bedroom 2	3.30 x 3.10	10'10" x 10'2"
Terrace (approx.)	4.20 x 2.62	13'9" x 8'7"



These floor plans are illustrative and for marketing purposes only. Maximum measurements are shown with longer dimension quoted first. Dimensions are quoted for the main area of the room only. Built-in wardrobes not included in the overall room dimensions. Furniture shown to illustrate possible room layouts and not included in sale. Designs vary according to plot. All details should be checked at the Sales Office. June 2021.