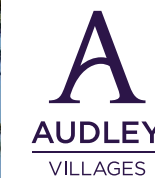


6 MOWBRAY HALL

TWO BEDROOM APARTMENT

Guide Price £700,000
(other fees apply)

It can only be Audley.



This charming and spacious two bedroom apartment has a prime location on the first floor of Mowbray Hall and is close to all the village amenities which are situated in the beautiful period main house. These include a restaurant with spacious terrace for warmer days, a bar bistro, library, lounge and health spa.

All rooms have a south westerly aspect, with views from the balcony over stunning grounds and gardens.

Property specification:

- Prime location with lift access to underground car park
- En suite shower room in the master bedroom, and a guest bathroom accessed from hallway.
- Private balcony with outstanding views
- SieMatic fully fitted kitchen with integrated appliances,

Fees:

Monthly management fee: £1145.65

Annual ground rent: £500

Council Tax Band: F

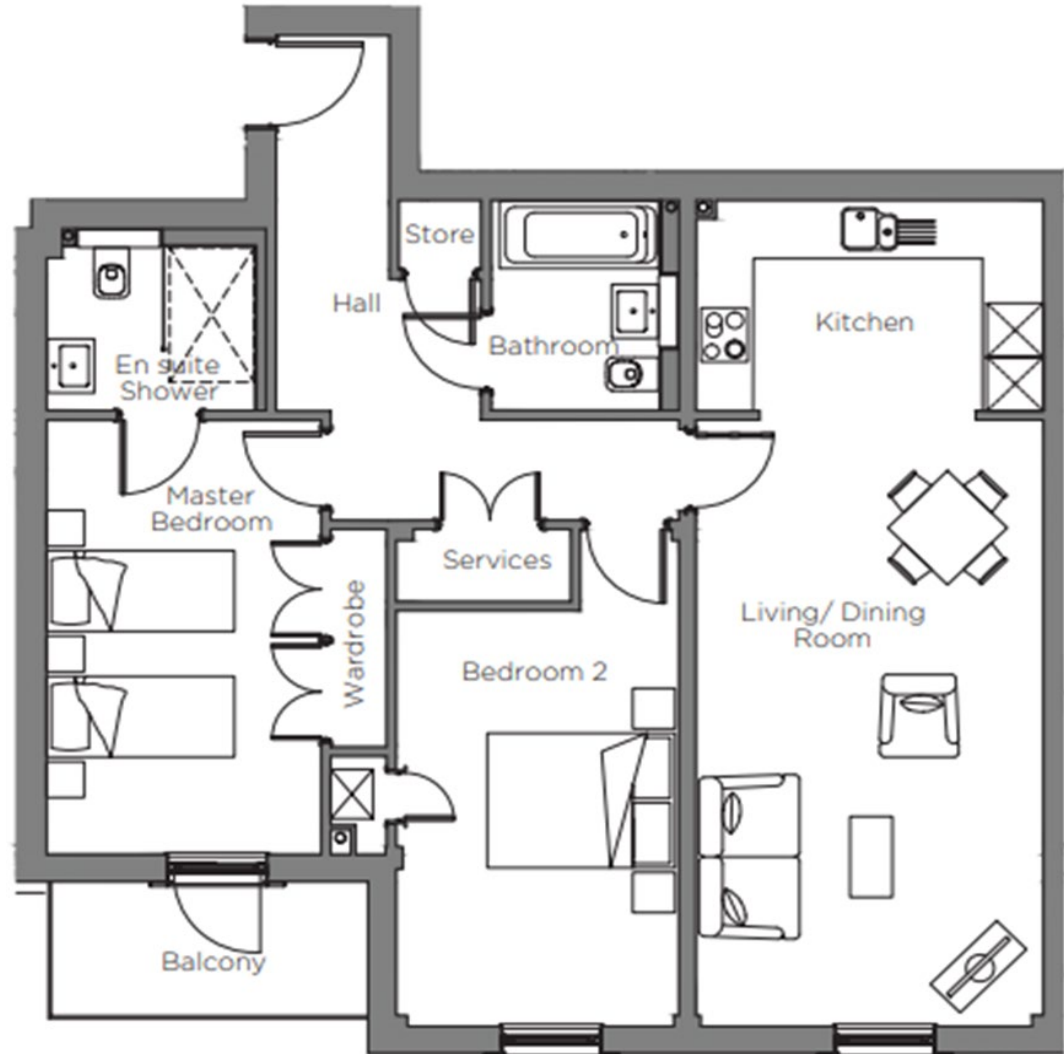
A deferred management charge applies to this property, please ask the sales team for more information.

Viewing by appointment with the sales office.

01753 201 305

coopersales@audleyvillages.co.uk





Internal Measurements	Metric (m)	Imperial (ft)
Living room / Dining room	6.76 X 3.69	22'2 X 12'2
Kitchen	3.70 X 2.35	12'2 X 7'8
Main Bedroom	4.73 X 2.92	15'6' X 9'7
Bedroom two	4.08 X 3.29	15'2' X 9'11
Balcony	3.37 X 1.47	11'1 X 4'10

Built in wardrobes in bedrooms have not been included in the overall dimensions. Maximum measurements shown.

Furniture shown to illustrate possible room layouts and not included in sale. July 2024

Score	Energy rating	Current	Potential
92+	A		
81-91	B	85 B	85 B
69-80	C		
55-68	D		
39-54	E		
21-38	F		
1-20	G		

