

# TWO BEDROOM, FIRST FLOOR APARTMENT

31 Watercroft Place, Plot 90. Audley Wycliffe Park,  
Bigmore Lane, Horsleys Green, Buckinghamshire HP14 3XL  
01494 324 966

## Property specifications:

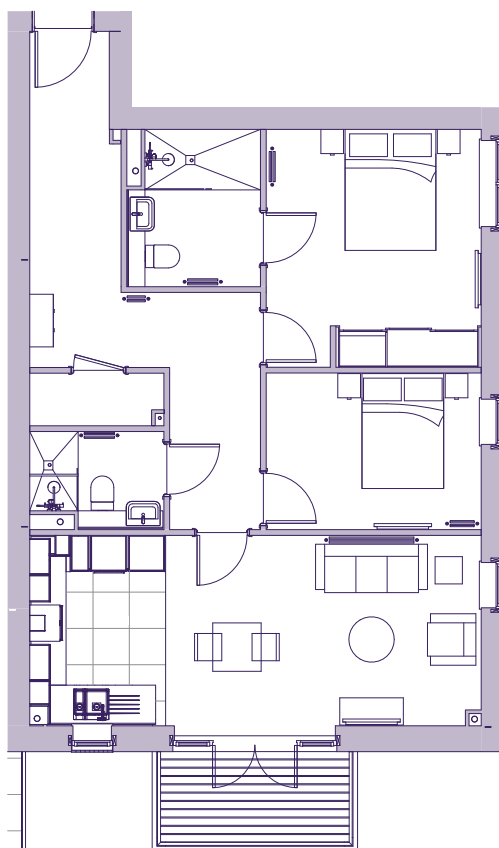
- Spacious terrace
- Open layout kitchen/living/dining room
- Fitted Nobilia handleless kitchen
- Integrated Neff appliances in the kitchen
- Second double bedroom
- Large main bedroom with en suite
- En suite and guest bathroom fitted with Villeroy & Boch sanitaryware
- Storage in the main bedroom
- Hallway storage

Please see the village brochure and key facts for further information.

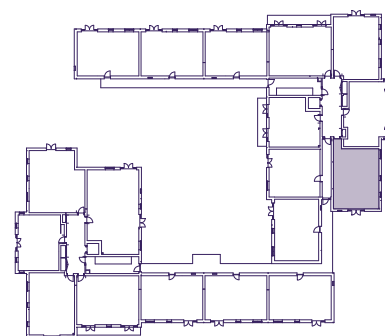


# THE LAYOUT

**31 Watercroft Place, Plot 90. Audley Wycliffe Park,  
Bigmore Lane, Horsleys Green, Buckinghamshire HP14 3XL**



Internal Measurements	Metric (m)	Imperial (ft)
Bedroom 1	3.93 x 3.55	12'11" x 11'8"
Bedroom 2	2.59 x 3.55	8'6" x 11'8"
Kitchen	3.15 x 2.25	10'4" x 7'5"
Living/dining room	3.15 x 5.21	10'4" x 17'1"
Services	0.87 x 2.22	2'10" x 7'3"
Terrace	1.64 x 3.39	5'5" x 11'2"



These floor plans are illustrative and for marketing purposes only. Maximum measurements are shown with longer dimension quoted first. Dimensions are quoted for the main area of the room only. Built-in wardrobes not included in the overall room dimensions. Furniture shown to illustrate possible room layouts and not included in sale. Designs vary according to plot. All details should be checked at the Sales Office. November 2021.