

TWO BEDROOM, SECOND FLOOR APARTMENT

**39 Watercroft Place, Plot 98. Audley Wycliffe Park,
Bigmore Lane, Horsleys Green, Buckinghamshire HP14 3XL
01494 324 966**

Property specifications:

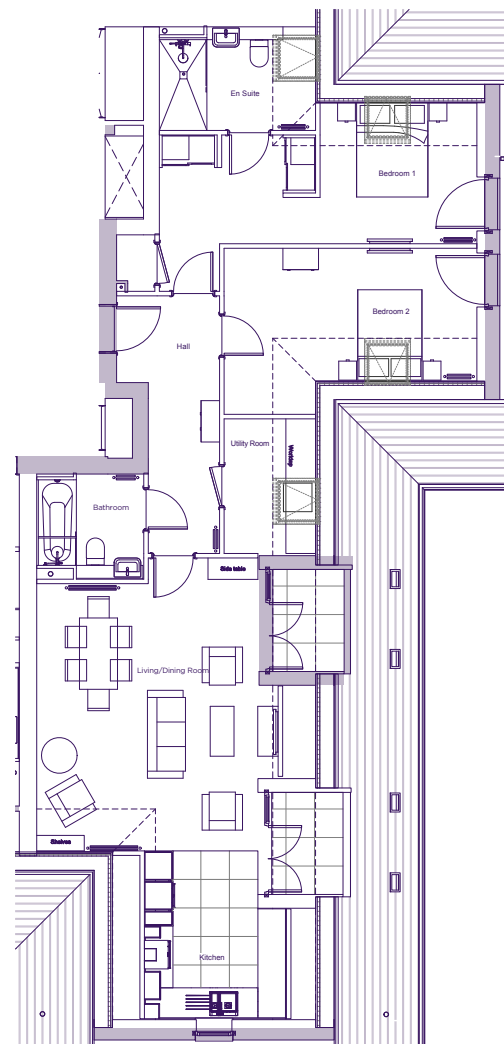
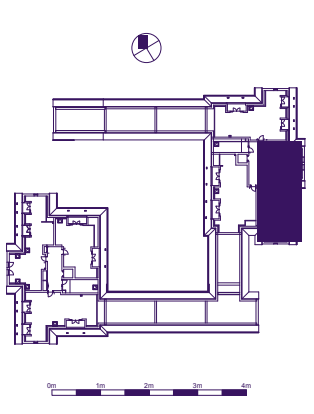
- Second floor/penthouse apartment with lift access
- Two private south-east facing balconies off the open plan kitchen/living/dining room
- Nobilia kitchen with integrated Neff appliances
- Utility room with worktop
- Fitted wardrobes and en suite shower room in the main bedroom
- Juliet balconies in both the main bedroom and second bedroom
- Guest bathroom with Villeroy & Boch sanitaryware

Please see the village brochure and key facts for further information.



THE LAYOUT

**39 Watercroft Place, Plot 98. Audley Wycliffe Park,
Bigmore Lane, Horsleys Green, Buckinghamshire HP14 3XL**



Internal Measurements	Metric (m)	Imperial (ft)
Bedroom 1	2.98 x 6.68	9'9" x 21'11"
Bedroom 2	2.77 x 5.32	9'1" x 17'5"
Kitchen	2.53 x 2.99	11'7" x 9'10"
Living/dining Room	6.16 x 4.65	20'3" x 15'3"
Services	1.21 x 0.81	4'0" x 2'8"
Terrace	2.15 x 1.50	7'1" x 4'11"
Terrace	2.15 x 1.50	7'1" x 4'11"
Utility Room	2.86 x 1.92	9'4" x 6'4"

These floor plans are illustrative and for marketing purposes only. Maximum measurements are shown with longer dimension quoted first. Dimensions are quoted for the main area of the room only. Built-in wardrobes not included in the overall room dimensions. Furniture shown to illustrate possible room layouts and not included in sale. Designs vary according to plot. All details should be checked at the Sales Office. November 2021.