

# TWO BEDROOM, SECOND FLOOR APARTMENT

14 Ostlers Court, Plot 40. Audley Wycliffe Park,  
Bigmore Lane, Horsleys Green, Buckinghamshire HP14 3XL  
01494 324 966

## Property specifications:

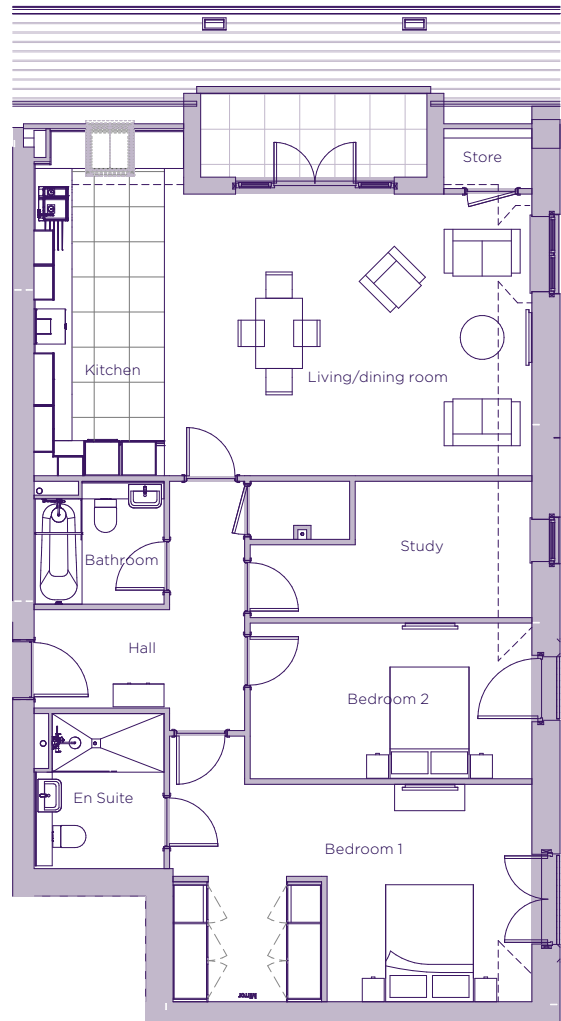
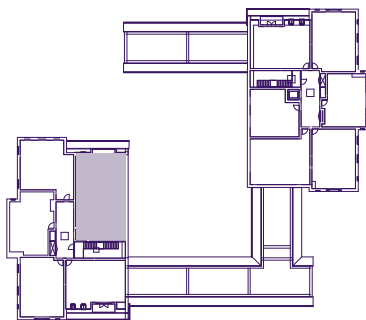
- Dual-aspect apartment
- Two large double bedrooms and additional study
- Fitted wardrobes in dressing area of main bedroom
- Spacious open plan kitchen/living/dining room
- Villeroy & Boch sanitaryware in the main bedroom en suite and additional shower room
- Large private terrace accessed from living room
- Fitted Nobilia kitchen with handleless units
- Lift access

Please see the village brochure and key facts for further information.



# THE LAYOUT

**14 Ostlers Court, Plot 40. Audley Wycliffe Park,  
Bigmore Lane, Horsleys Green, Buckinghamshire HP14 3XL**



Internal Measurements	Metric (m)	Imperial (ft)
Balcony	1.50 x 3.87	4'11" x 12'8"
Bedroom 1	3.72 x 3.50	12'2" x 11'6"
Bedroom 1 walk-in wardrobe	2.04 x 2.54	6'8" x 8'4"
Bedroom 2	2.66 x 4.82	8'9" x 15'10"
Kitchen	5.93 x 2.23	19'5" x 7'4"
Living/dining room	4.81 x 6.28	15'10" x 20'7"
Services	0.99 x 1.70	3'3" x 5'7"
Study	2.33 x 3.02	7'8" x 9'11"

These floor plans are illustrative and for marketing purposes only. Maximum measurements are shown with longer dimension quoted first. Dimensions are quoted for the main area of the room only. Built-in wardrobes not included in the overall room dimensions. Furniture shown to illustrate possible room layouts and not included in sale. Designs vary according to plot. All details should be checked at the Sales Office. November 2021.