

TWO BEDROOM, FIRST FLOOR APARTMENT

8 Dellwood Court, Plot 55. Audley Wycliffe Park,
Bigmore Lane, Horsleys Green, Buckinghamshire HP14 3XL
01494 324 966

Property specifications:

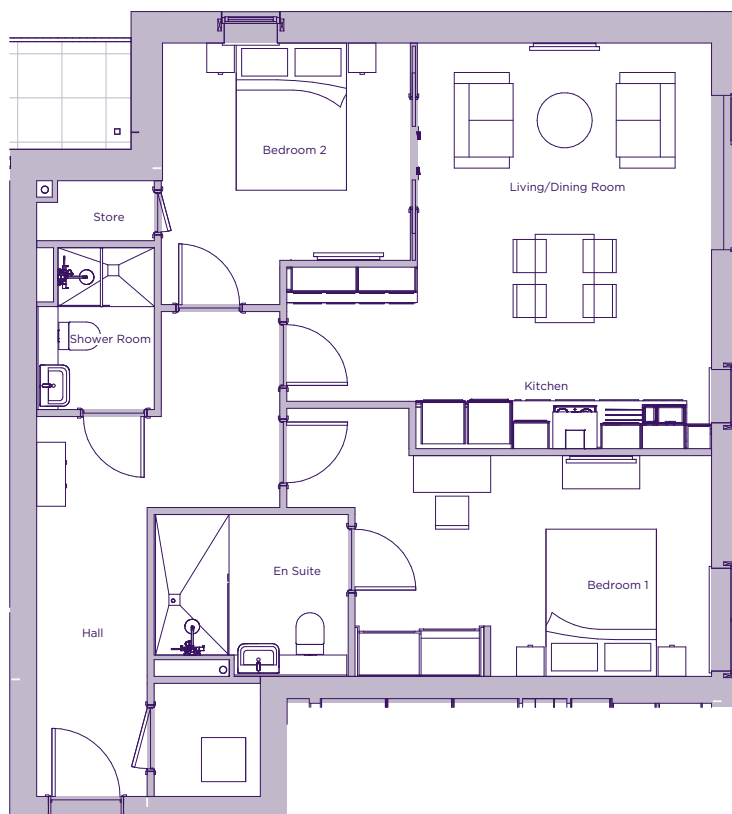
- First floor apartment with lift access
- Open plan kitchen, living and dining area
- Fitted Nobilia handleless units in the kitchen with integrated Neff appliances
- Double doors in the living/dining room leading to private south-east facing balcony
- Two double bedrooms
- Main bedroom has built-in wardrobe and en suite shower room
- Second double bedroom has pocket sliding doors into the living/dining room
- Guest shower room with Villeroy & Boch sanitaryware

Please see the village brochure and key facts for further information.

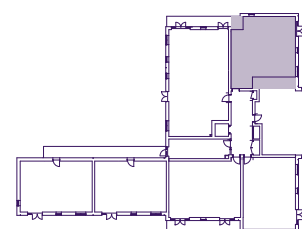


THE LAYOUT

**8 Dellwood Court, Plot 55. Audley Wycliffe Park,
Bigmore Lane, Horsleys Green, Buckinghamshire HP14 3XL**



Internal Measurements	Metric (m)	Imperial (ft)
Bedroom 1	3.00 x 4.84	9'10" x 15'11"
Bedroom 2	3.37 x 2.95	11'1" x 9'8"
Kitchen	2.39 x 5.77	7'10" x 18'11"
Living/dining room	3.12 x 4.00	10'3" x 13'1"
Services	1.54 x 1.45	5'0" x 4'9"
Store	0.82 x 1.60	2'8" x 5'3"
Terrace (approx)	3.49 x 1.63	11'5" x 5'4"



These floor plans are illustrative and for marketing purposes only. Maximum measurements are shown with longer dimension quoted first. Dimensions are quoted for the main area of the room only. Built-in wardrobes not included in the overall room dimensions. Furniture shown to illustrate possible room layouts and not included in sale. Designs vary according to plot. All details should be checked at the Sales Office. November 2021.