

8 Beech Court



8 Beech Court

A spacious one bedroom, south facing, ground floor apartment with an outdoor terrace, located in the heart of Willicombe Park. Accommodation comprises of a generous kitchen-breakfast room, living/dining room, double bedroom, bathroom and separate shower room/WC. Parking is available nearby.

Property specification

- Kitchen-breakfast room with integrated appliances including oven, microwave, fridge-freezer and dishwasher
- Spacious living/dining room
- Double bedroom with double fitted wardrobes
- Bathroom
- Shower room
- Double glazing and gas central heating
- Vacant possession
- Parking nearby

£325,000 (other fees apply)

Monthly management fee: £1117.38

Annual ground rent: £200

Council Tax: C

A deferred management charge applies to this property, please ask the sales team for more information.

Viewing by appointment with the sales office.

01892 457 002 willicombesales@audleyvillages.co.uk

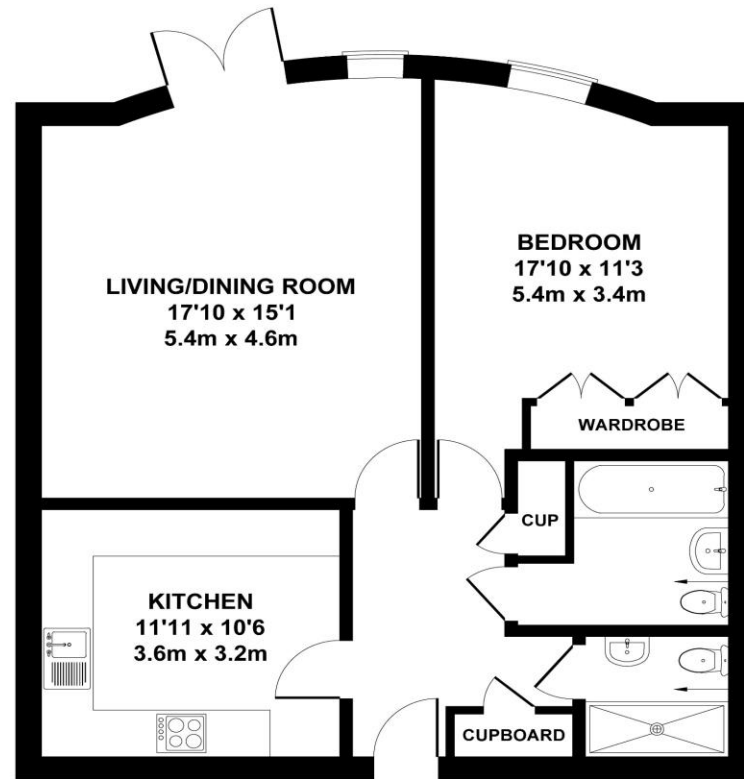


8 Beech Court

Internal Measurements	Metric (m)	Imperial (ft)
Living/dining room	5.4 x 4.6	17'10" x 15'1"
Kitchen-breakfast room	3.6 x 3.2	11'11" x 10'6"
Bedroom	5.4 x 3.4	17'10" x 11'3"
Bathroom	2.5 x 2.1	8'0" x 6'11"
Shower room/WC	1.7 x 1.6	5'5" x 5'1"
Total Sq. Ft: 729		

Built in wardrobes in bedrooms have not been included in the overall dimensions. Maximum measurements shown.

Score	Energy rating	Current	Potential
92+	A		
81-91	B	81 B	83 B
69-80	C		
55-68	D		
39-54	E		
21-38	F		
1-20	G		



APPROX. FLOOR
AREA 729 SQ.FT.
(67.6 SQ.M.)



Not to Scale. Produced by The Plan Portal 2019
For Illustrative Purposes Only.

Furniture shown to illustrate possible room layouts and not included in sale.
Designs vary according to plot and all details should be checked at the Sales office. May 2024

