

# TWO BEDROOM, COTTAGE

**1 Gloucester Stables, Plot 99. Audley Sunningdale Park,  
Silwood Road, Ascot, Berkshire SL5 0QB  
01344 859 239**

## Property specifications:

- Unique two bedroom property in the converted stables
- Main bedroom has built-in wardrobes and en suite shower room
- Second double bedroom and guest bathroom
- Luxury Villeroy & Boch sanitaryware and Hansgrohe fittings
- Open plan kitchen, living and dining which leads to a private terrace
- SieMatic kitchen with integrated appliances

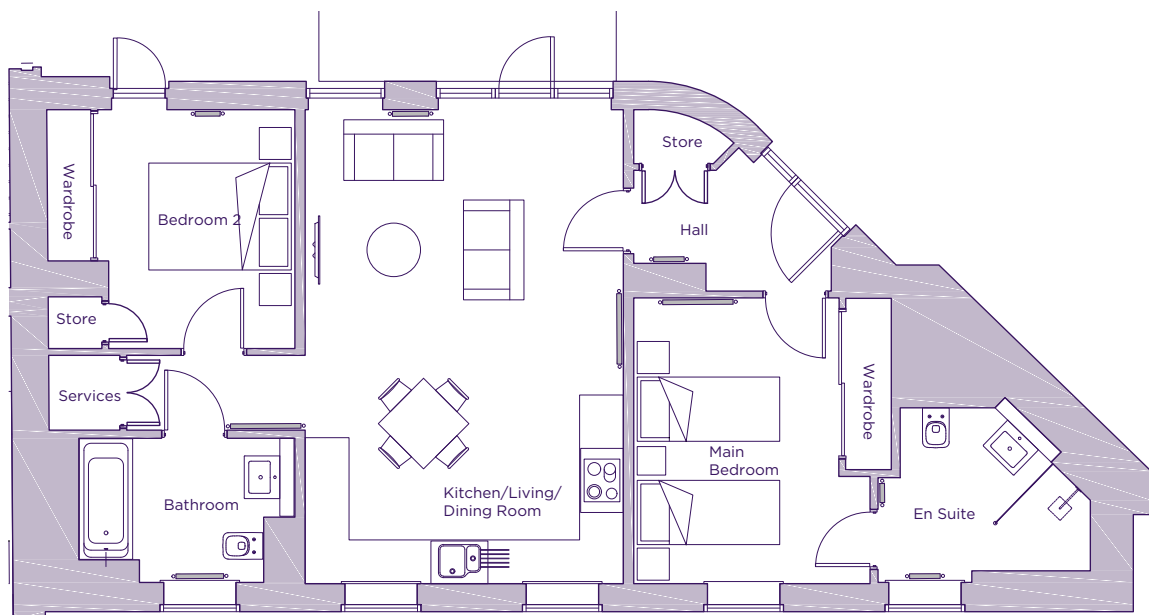
Please see the village brochure and key facts for further information.



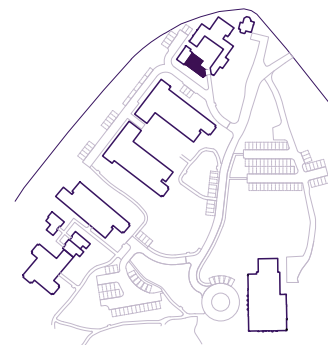
Images for illustration purposes only.

# THE LAYOUT

**1 Gloucester Stables, Plot 99. Audley Sunningdale Park,  
Silwood Road, Ascot, Berkshire SL5 0QB**



Internal Measurements	Metric (m)	Imperial (ft)
Kitchen/Living/Dining Room	6.66 x 4.47	21'10" x 14'8"
Main Bedroom	4.01 x 2.88	13'2" x 9'5"
Bedroom 2	3.36 x 2.77	11'0" x 9'1"
Terrace	4.18 x 2.5	13'8" x 8'2"



These floor plans are illustrative and for marketing purposes only. Maximum measurements are shown with longer dimension quoted first. Dimensions are quoted for the main area of the room only. Built-in wardrobes not included in the overall room dimensions. Furniture shown to illustrate possible room layouts and not included in sale. Designs vary according to plot. All details should be checked at the Sales Office. June 2021.