

# ONE BEDROOM, THIRD FLOOR APARTMENT

**26 Owen Court, Plot 98a. Audley Sunningdale Park,  
Silwood Road, Ascot, Berkshire SL5 0QB  
01344 859 239**

## Property specifications:

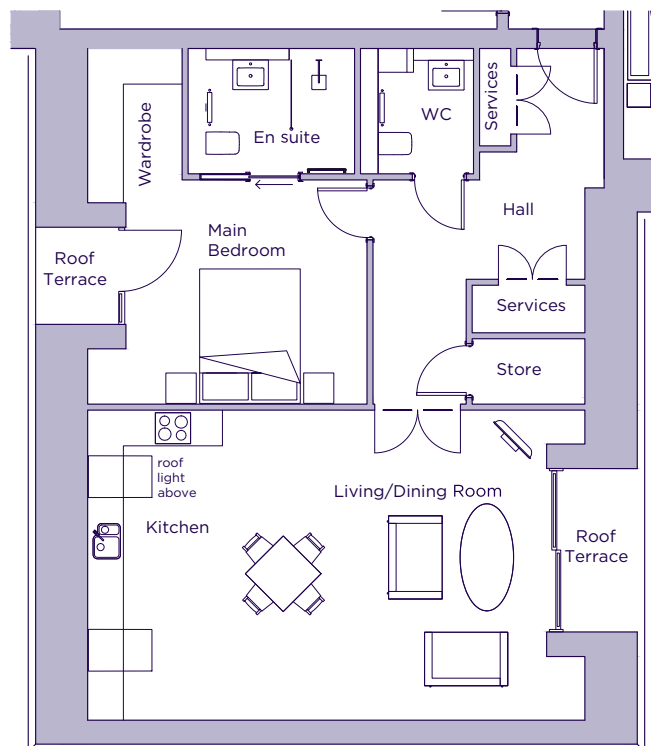
- Triple-aspect apartment
- Double bedroom with en suite shower room and built-in wardrobes
- Open plan kitchen and living space with room for dining table
- Bathroom and en suite fitted with elegant white Geberit sanitaryware
- South-east facing private terrace accessible from living room
- Private terrace accessible from main bedroom
- Ceiling window for additional sunlight
- Generous storage cupboards

Please see the village brochure and key facts for further information.

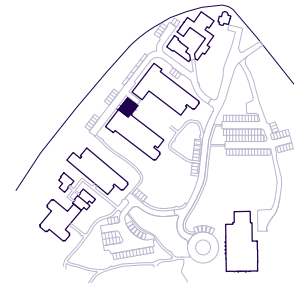


# THE LAYOUT

**26 Owen Court, Plot 98a. Audley Sunningdale Park,  
Silwood Road, Ascot, Berkshire SL5 0QB**



Internal Measurements	Metric (m)	Imperial (ft)
Living/Dining Room	6.10 x 5.22	20'0" x 17'1"
Kitchen	5.22 x 2.27	17'1" x 7'5"
Main Bedroom	4.06 x 3.78	13'4" x 12'5"
Terrace 1 (approx.)	2.75 x 1.05	9'0" x 3'5"
Terrace 2 (approx.)	1.64 x 1.13	5'4" x 3'8"



These floor plans are illustrative and for marketing purposes only. Maximum measurements are shown with longer dimension quoted first. Dimensions are quoted for the main area of the room only. Built-in wardrobes not included in the overall room dimensions. Furniture shown to illustrate possible room layouts and not included in sale. Designs vary according to plot. All details should be checked at the Sales Office. June 2021.