

# TWO BEDROOM, COTTAGE

**3 Gloucester Stables, Plot 101. Audley Sunningdale Park,  
Silwood Road, Ascot, Berkshire SL5 0QB  
01344 859 239**

## Property specifications:

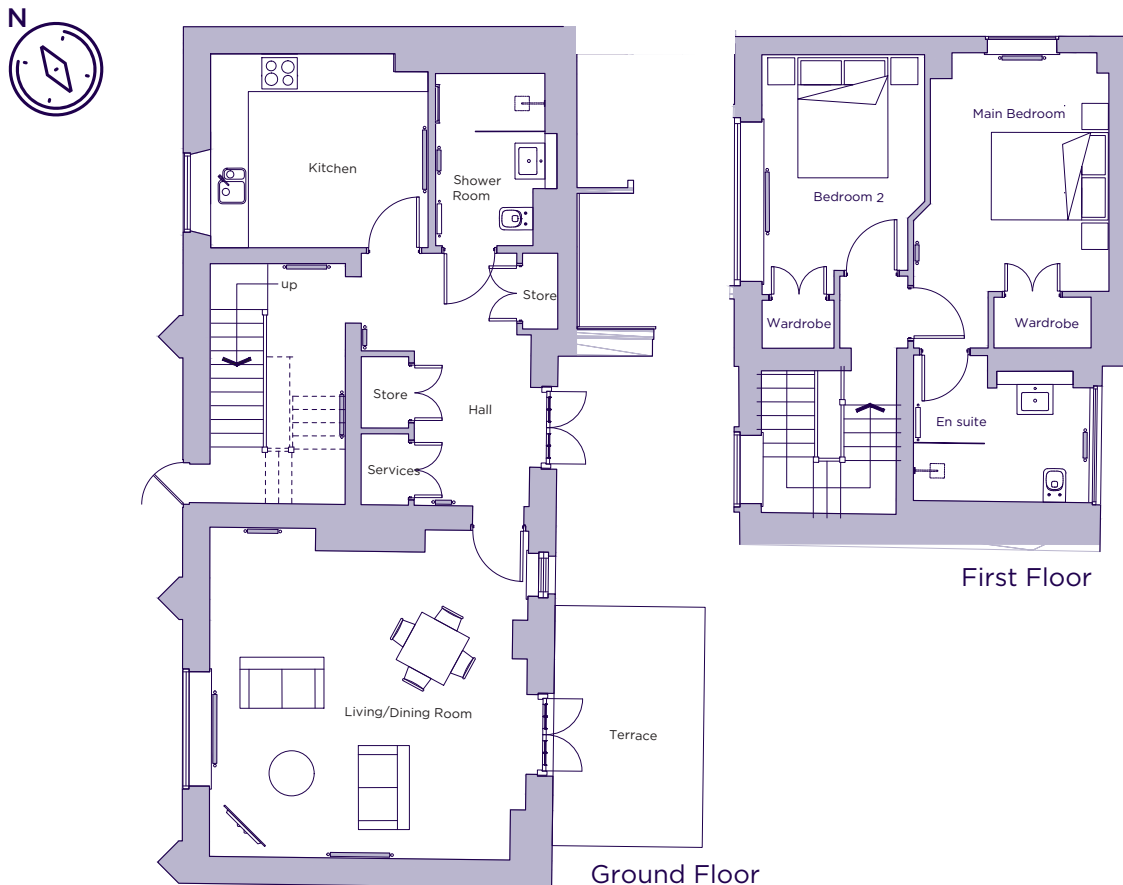
- A unique two bedroom duplex property in the converted stables
- The main bedroom has built-in wardrobe and en suite shower room
- Second bedroom has built-in cupboard
- Large, separate SieMatic kitchen with integrated appliances
- Space for dining table and chairs in the living room which leads to a terrace
- Luxury Villeroy & Boch sanitaryware and Hansgrohe fittings
- Separate shower room on the ground floor
- Carpeted and decorated throughout

Please see the village brochure and key facts for further information.

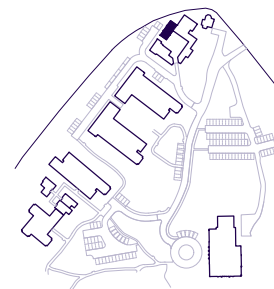


# THE LAYOUT

**3 Gloucester Stables, Plot 101. Audley Sunningdale Park,  
Silwood Road, Ascot, Berkshire SL5 0QB**



Internal Measurements	Metric (m)	Imperial (ft)
Kitchen	3.23 x 3.62	10'7" x 11'11"
Living/Dining Room	5.49 x 5.30	18'0" x 17'5"
Main Bedroom	4.92 x 3.26	16'2" x 10'8"
Bedroom 2	4.00 x 2.71	13'1" x 8'11"
Terrace	4.00 x 2.50	13'1" x 8'2"



These floor plans are illustrative and for marketing purposes only. Maximum measurements are shown with longer dimension quoted first. Dimensions are quoted for the main area of the room only. Built-in wardrobes not included in the overall room dimensions. Furniture shown to illustrate possible room layouts and not included in sale. Designs vary according to plot. All details should be checked at the Sales Office. June 2021.