

1 CHAINS COURT ONE BEDROOM APARTMENT

Guide Price £299,000
(other fees apply)



This charming and spacious one bedroom apartment has a prime location on the ground floor of Chains Court, close to all the village amenities.

The master bedroom has built-in wardrobes, an ensuite shower room and enjoys views over landscaped gardens to the rear. The ensuite and guest WC are both fitted with Villeroy & Boch sanitaryware and the SieMatic kitchen benefits from integrated Neff appliances.

Property specifications

- Ground floor
- Ensuite shower room and a guest WC
- Shared terrace
- SieMatic kitchen with Neff appliances
- Guest Suite Facilities (subject to availability and costs)

Fees

Monthly management fee: £553.68

Annual ground rent: £500

Bistro credit: £73.84 (per month)

Council Tax Band: D

Tenure: Leasehold

A deferred management charge applies to this property, please ask the sales team for more information.

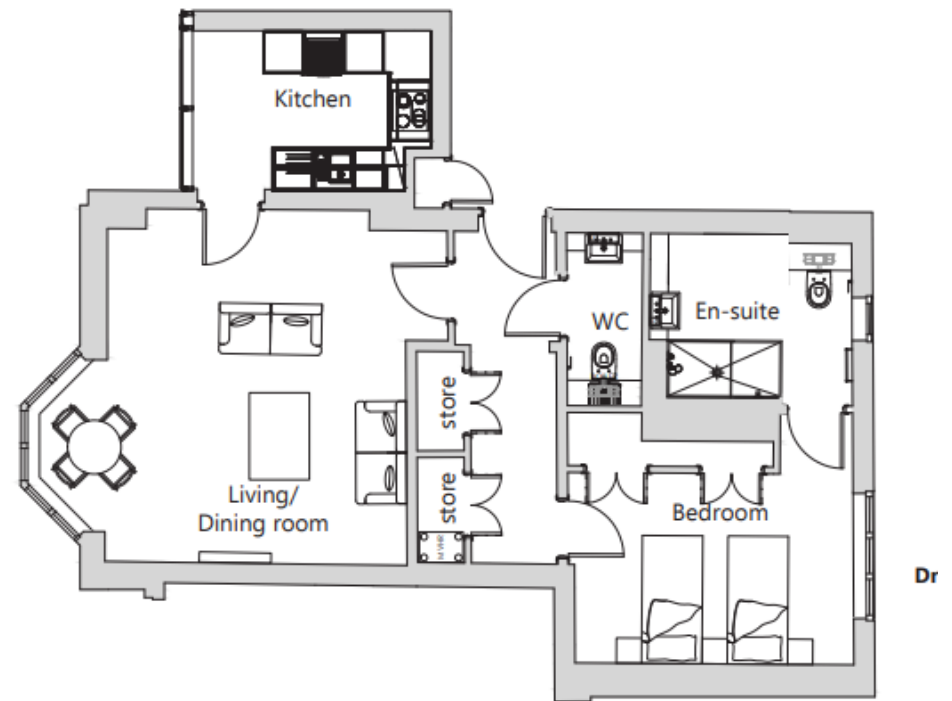
Viewing by appointment with the sales office.

0121 4545270

stgeorgesales@audleyvillages.co.uk



Internal Measurements	Metric (m)	Imperial (ft)
Living room / Dining room	5.83 X 4.89	19'12" X 16'.04"
Kitchen	4.35 X 3.01	14'27" X 9'87"
Main Bedroom	4.78 X 3.65	15'68" X 11'97"
Total Apartment Area	75m ²	807ft ²



Built in wardrobes in bedrooms have not been included in the overall dimensions. Maximum measurements shown.

Furniture shown to illustrate possible room layouts and not included in sale.

Score	Energy rating	Current	Potential
92+	A		
81-91	B		
69-80	C		
55-68	D	67 D	67 D
39-54	E		
21-38	F		
1-20	G		

