

TWO BEDROOM, COTTAGE

**North Lodge, Plot 48. Audley Sunningdale Park,
Silwood Road, Ascot, Berkshire SL5 0QB
01344 859 239**

Property specifications:

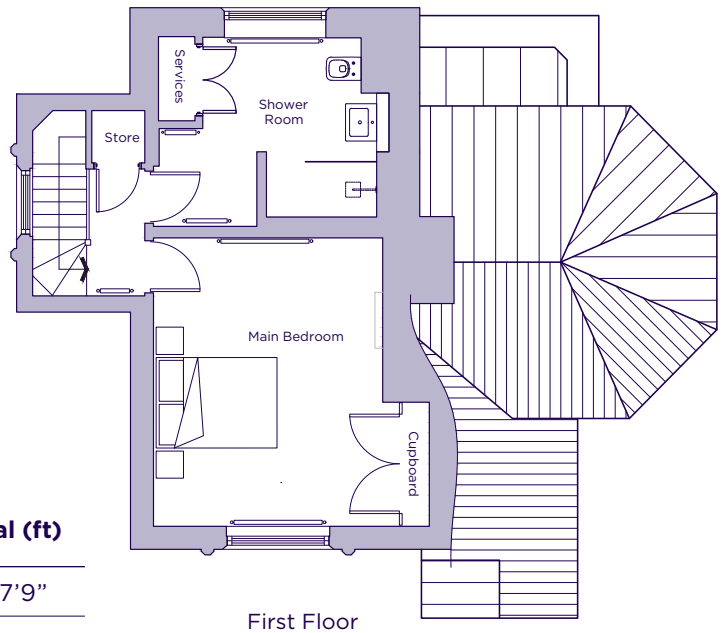
- A unique, fully detached property in a converted lodge at the entrance to the village
- Two bedrooms, one with large bay windows
- The main bedroom with en suite shower room is located on the ground floor
- Separate shower room and guest WC
- Second bedroom has built-in cupboard
- Separate kitchen with access to the grounds
- Space for dining table and chairs in the living room

Please see the village brochure and key facts for further information.

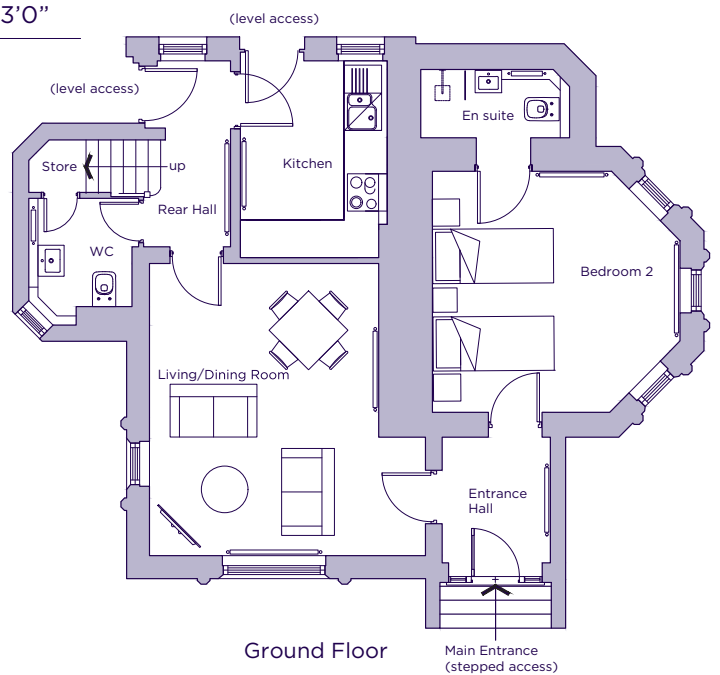
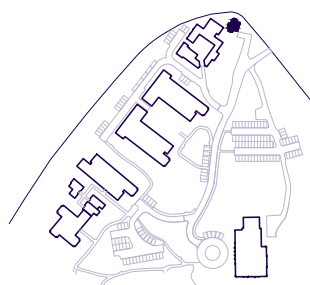


THE LAYOUT

**North Lodge, Plot 48. Audley Sunningdale Park,
Silwood Road, Ascot, Berkshire SL5 0QB**



Internal Measurements	Metric (m)	Imperial (ft)
Kitchen	3.17 x 2.37	10'5" x 7'9"
Living/Dining Room	4.71 x 4.45	15'5" x 14'7"
Bedroom 2	3.99 x 3.89	13'1" x 12'9"
Main Bedroom	4.65 x 3.96	15'3" x 13'0"



These floor plans are illustrative and for marketing purposes only. Maximum measurements are shown with longer dimension quoted first. Dimensions are quoted for the main area of the room only. Built-in wardrobes not included in the overall room dimensions. Furniture shown to illustrate possible room layouts and not included in sale. Designs vary according to plot. All details should be checked at the Sales Office. June 2021.