



47 INGLEWOOD HOUSE

Guide Price £850,000
(other fees apply)



It can only be Audley.



This dual aspect third floor apartment benefits from convenient access to the main facilities and Audley club. Available for the first time since it was bought from new over a decade ago, the apartment has benefited from recent re-decoration throughout and boasts a very spacious living area enjoying countryside and village gardens views. The property comprises a modern SieMatic kitchen (that has been extended to include additional work top space and room for further free-standing appliances), the main and second bedroom are both doubles, and feature an en suite shower room.

Key Features

- Rare opportunity to acquire
- Spacious living accommodation
- SieMatic kitchen with integrated appliances including fridge freezer, dishwasher, oven, hob, microwave oven, and a washer dryer
- Study or third bedroom
- Separate W.C

Fees

Monthly management fee £1055.43

Annual ground rent £250

Parking: No parking fees apply

Bistro credit: £77.96

Council Tax Band: F

Tenure: Leasehold

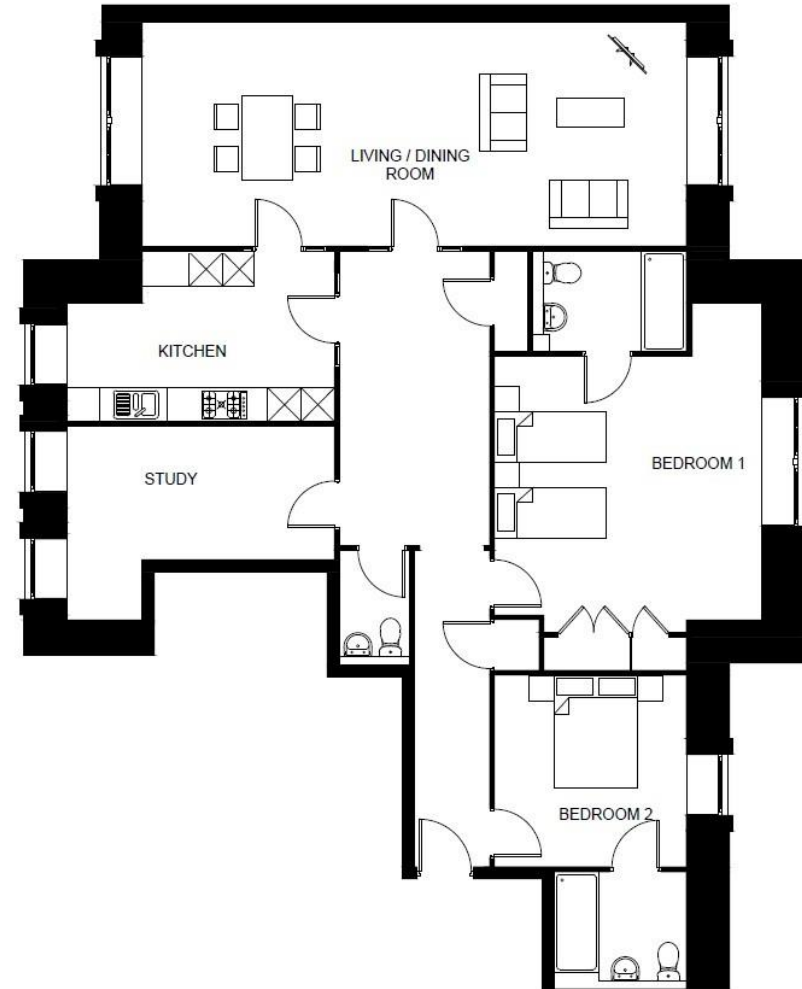
Audley owners have our firm undertaking that their monthly management fee will increase only once a year. A deferred management charge also applies to this property, please ask the sales team for more information.

Viewing by appointment with the sales office.

01488 682 100 inglewoodsales@audleyvillages.co.uk



Internal Measurements	Metric (m)	Imperial (ft)
Living room / Dining room	9.7 X 4.0	31'11" x 13'1"
Kitchen	4.8 X 3.0	15'9" x 10'
Main Bedroom	4.8 X 5.6	15'8" x 18'5"
Bedroom two	3.4 X 3.4	11'3" x 11'3"
Bedroom Three / Study	4.8 X 3.4	15'9" x 11'5"
Apartment approx. Size: 1492sqft		



Built in wardrobes in bedrooms have not been included in the overall dimensions. Maximum measurements shown.

Furniture shown to illustrate possible room layouts and not included in sale.

Score	Energy rating	Current	Potential
92+	A		
81-91	B		
69-80	C	69 C	70 C
55-68	D		
39-54	E		
21-38	F		
1-20	G		

