

# TWO BEDROOM, GROUND FLOOR APARTMENT

13 Beckings Court, Plot 107. Audley Wycliffe Park,  
Bigmore Lane, Horsleys Green, Buckinghamshire HP14 3XL  
01494 324 966

## Property specifications:

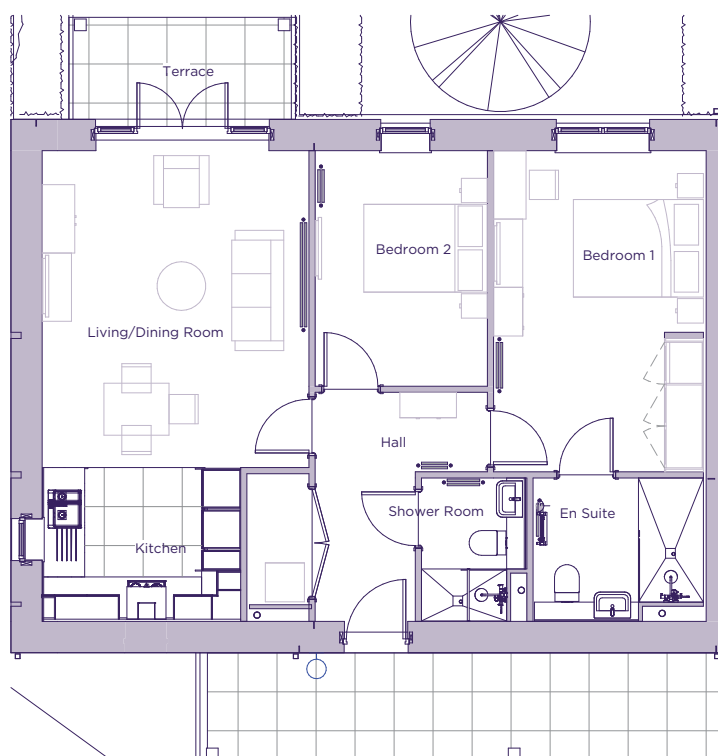
- Open plan kitchen and living room with access to the private terrace
- Ground floor apartment
- Large terrace accessible via the main bedroom and living room
- Two double bedrooms
- Main bedroom has an en suite shower
- Kitchen fitted with handleless Nobilia units and Neff appliances
- Guest shower room fitted with Villeroy & Boch sanitaryware
- Hallway storage

Please see the village brochure and key facts for further information.

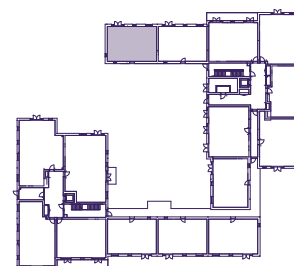


# THE LAYOUT

**13 Beckings Court, Plot 107. Audley Wycliffe Park,  
Bigmore Lane, Horsleys Green, Buckinghamshire HP14 3XL**



Internal Measurements	Metric (m)	Imperial (ft)
Living/dining room	4.94 x 3.27	16'2" x 10'9"
Kitchen	3.62 x 2.66	11'11" x 8'9"
Main bedroom	2.36 x 3.05	7'9" x 10'0"
Bedroom 2	4.87 x 4.10	16'0" x 13'6"
Services	2.02 x 0.96	6'7" x 3'2"
Terrace (approx)	1.55 x 3.31	5'1" x 10'10"



These floor plans are illustrative and for marketing purposes only. Maximum measurements are shown with longer dimension quoted first. Dimensions are quoted for the main area of the room only. Built-in wardrobes not included in the overall room dimensions. Furniture shown to illustrate possible room layouts and not included in sale. Designs vary according to plot. All details should be checked at the Sales Office. November 2021.