

# 29 Willicombe Park

Guide Price £285,000  
(other fees apply)



*It can only be Audley.*



This charming and spacious one bedroom, ground floor maisonette is in a pretty location in a quiet corner within the grounds of Willicombe Park, offering four acres of landscaped gardens and walks.

The property benefits from built in wardrobes in the main bedroom, a newly fitted kitchen with appliances and a spacious double-aspect lounge-dining room leading to an outside terrace.

### Key Features

- One bedroom self-contained maisonette with outside space
- Ensuite shower/WC to the bedroom
- Family bathroom/shower with WC
- Bedroom with fitted wardrobes
- New fitted kitchen with integrated appliances including fridge freezer, new oven, new hob, and a washer dryer and dishwasher
- Pre-bookable guest suite for friends/relatives to come and stay
- Free parking to front

### Fees

Monthly management fee £1,126.16

Annual ground rent £200

Parking: No parking fees apply

Council Tax Band: C

**Tenure:** Leasehold

Audley owners have our firm undertaking that their monthly management fee will increase only once a year. A deferred management charge also applies to this property, please ask the sales team for more information.

Viewing by appointment with the sales office.

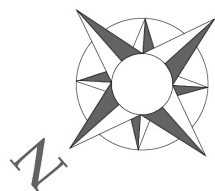
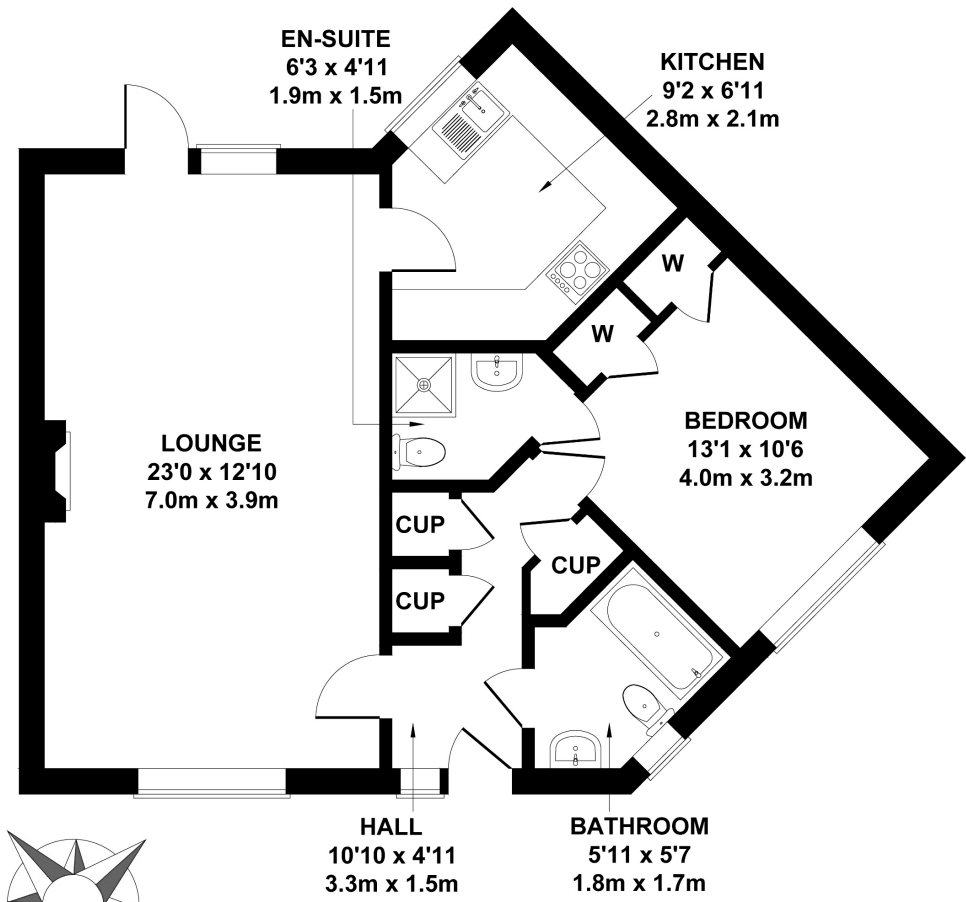
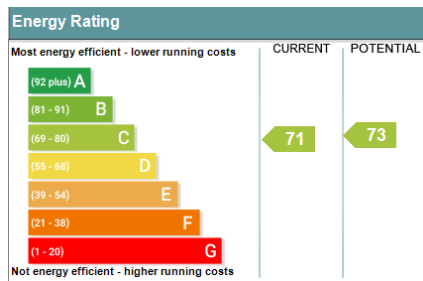
01892 457 002 [willicombesales@audleyvillages.co.uk](mailto:willicombesales@audleyvillages.co.uk)



Internal Measurements	Metric (m)	Imperial (ft)
Living room / Dining room	7.00 x 3.90	23'0" x 12'10"
Kitchen	2.80 x 2.10	9'2" x 6'x 11"
Bedroom	4.00 x 3.20	13'1 x 10'6"
Bathroom	1.80 x 1.70	5'11" x 5'7"
En suite	1.90 x 1.50	6'3" x 4'11"

Built in wardrobes in bedrooms have not been included in the overall dimensions. Maximum measurements shown.

Furniture shown to illustrate possible room layouts and not included in sale.



APPROX. FLOOR  
AREA 678 SQ.FT.  
(63.0 SQ.M.)

Not to Scale. Produced by The Plan Portal 2024  
For Illustrative Purposes Only.

