

TWO BEDROOM, FIRST FLOOR APARTMENT

**32 Watercroft Place, Plot 91. Audley Wycliffe Park,
Bigmore Lane, Horsleys Green, Buckinghamshire HP14 3XL
01494 324 966**

Property specifications:

- Spacious living/dining room
- Large terrace accessible from the living/dining room
- Luxury Nobilia handleless kitchen with integrated Neff appliances
- Second double bedroom
- Main bedroom with en suite
- En suite and guest shower room fitted with Villeroy & Boch sanitaryware
- Built-in wardrobes in the main bedroom
- Hallway storage
- Membership to the Audley Club

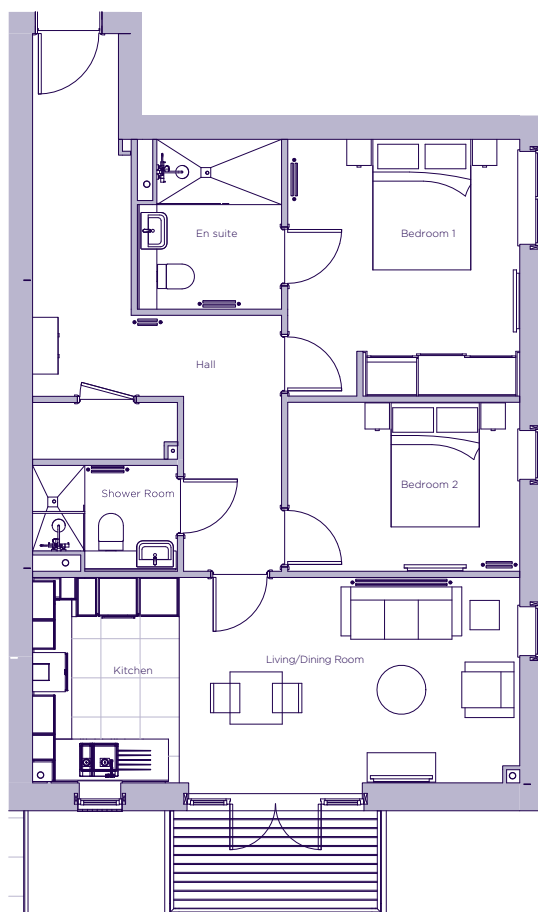
Please see the village brochure and key facts for further information.



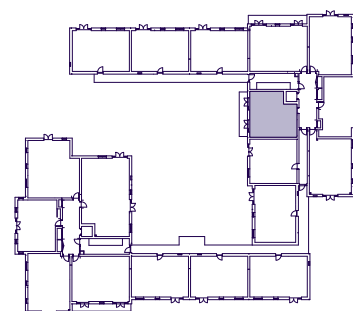
Images for illustration purposes only.

THE LAYOUT

**32 Watercroft Place, Plot 91. Audley Wycliffe Park,
Bigmore Lane, Horsleys Green, Buckinghamshire HP14 3XL**



Internal Measurements	Metric (m)	Imperial (ft)
Bedroom 1	3.93 x 3.55	12'11" x 11'8"
Bedroom 2	2.59 x 3.55	8'6" x 11'8"
Kitchen	3.15 x 2.25	10'4" x 7'5"
Living/Dining Room	3.15 x 5.21	10'4" x 17'1"
Services	0.87 x 2.22	2'10" x 7'3"
Terrace	1.64 x 3.39	5'5" x 11'2"



These floor plans are illustrative and for marketing purposes only. Maximum measurements are shown with longer dimension quoted first. Dimensions are quoted for the main area of the room only. Built-in wardrobes not included in the overall room dimensions. Furniture shown to illustrate possible room layouts and not included in sale. Designs vary according to plot. All details should be checked at the Sales Office. November 2021.