



5 Mote House

Two Bedroom Apartment

Guide Price £775,000
(other fees apply)



It can only be Audley.



A beautifully presented two-bedroom apartment within Mote House.

This property benefits from a spacious dual-aspect living room featuring large bay windows with views across the grounds. The property boasts two double bedrooms with the main bedroom benefitting from an ensuite bathroom and fitted wardrobes.

The Siematic Kitchen has integrated appliances and there is a further bathroom with a separate bath and shower.

Key Features

- Spacious living/dining room with large bay windows
- Fully fitted kitchen with integrated appliances
- Main bedroom with en suite and fitted wardrobes
- Additional bathroom with walk-in shower and bath
- Period features and high ceilings throughout

Fees

Monthly management fee £1006.01

Annual ground rent £250.00

Bistro credit: £83.00

Council Tax Band: F

Tenure Leasehold

Audley owners have our firm undertaking that their monthly management fee will increase only once a year. A deferred management charge also applies to this property, please ask the sales team for more information.

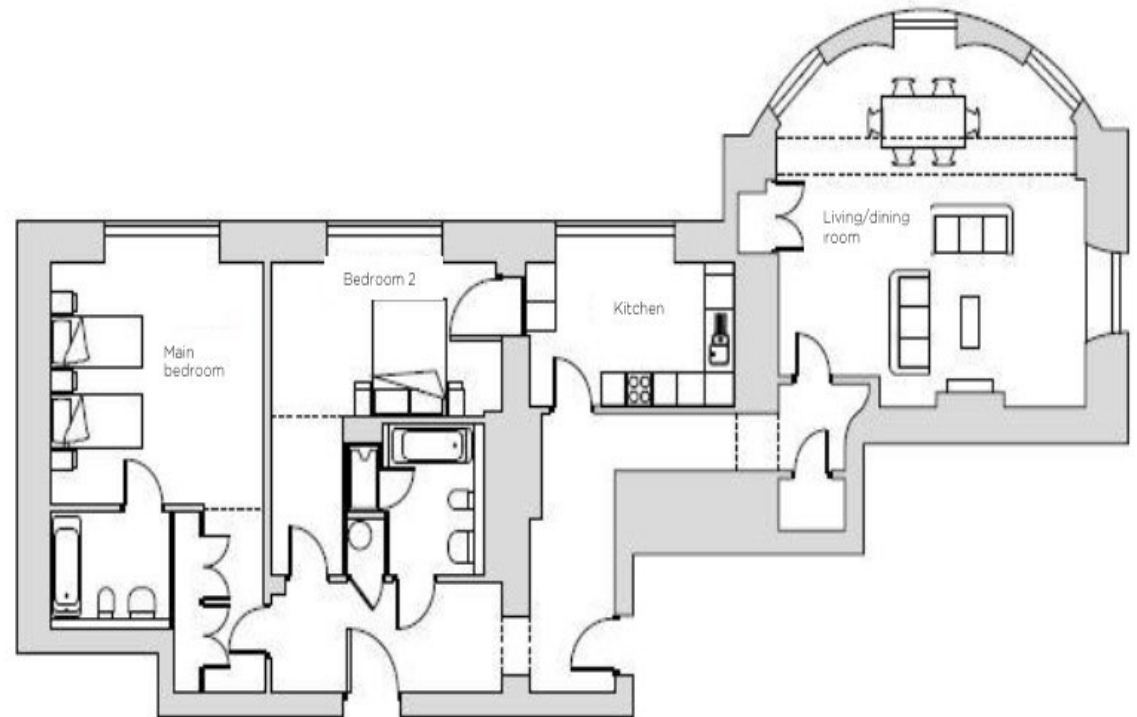
Viewing by appointment with the sales office.

01622 737 279

motesales@audleyvillages.co.uk



Internal Measurements	Metric (m)	Imperial (ft)
Living Room	6.65 x 6.24	12'10" X 9'7"
Kitchen	4.45 x 2.92	14'7" x 9'7"
Main Bedroom	5.51 X 4.50	17'5" X 11'0"
Bedroom two	4.83 X 3.03	15'10" X 9'11"



Built in wardrobes in bedrooms have not been included in the overall dimensions. Maximum measurements shown.

Furniture shown to illustrate possible room layouts and not included in sale.

Score	Energy rating	Current	Potential
92+	A		
81-91	B	84 B	87 B
69-80	C		
55-68	D		
39-54	E		
21-38	F		
1-20	G		

