

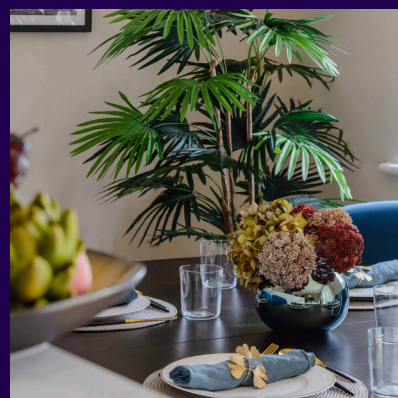
THREE BEDROOM PENTHOUSE

**50 Woodside House. Audley Shiplake Meadows,
Meadow Chase, Reading Road, Henley-on-Thames RG9 3JN
01182 349 279**

Property specifications:

- Dual-aspect property split over two floors
- Large double bedroom with en suite bathroom room, dressing room with built-in wardrobes, and south-facing private balcony
- Third room perfect for use as a study, hobbies room or day room
- Modern kitchen and integrated appliances
- Second double bedroom with en suite shower room, built-in wardrobes and private balcony
- Spacious utility room, storage room and cloakroom
- French doors from the living area leading out to private balcony

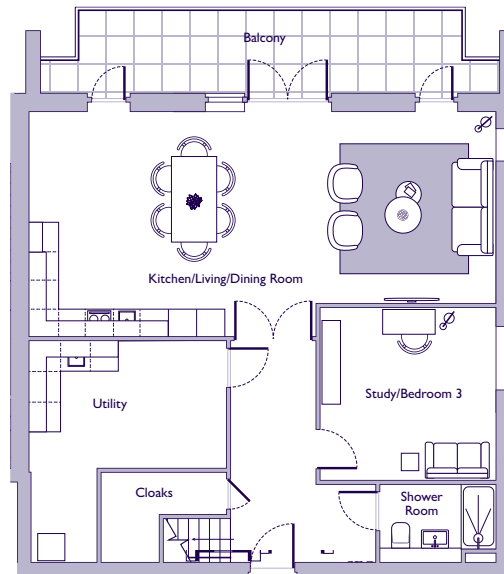
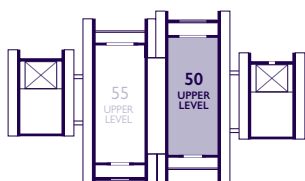
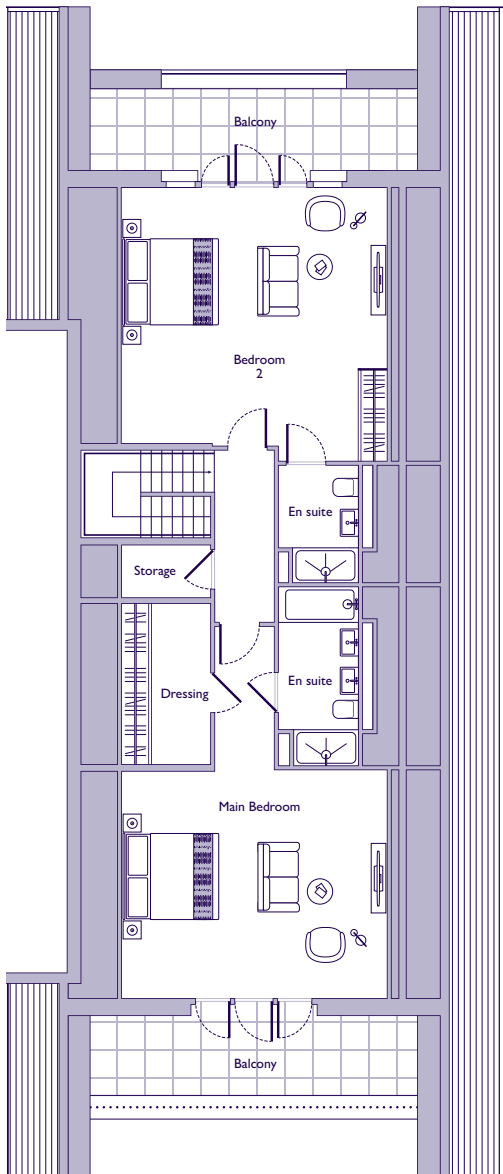
Please see the village brochure and key facts for further information.



Images for illustration purposes only.

THE LAYOUT

**50 Woodside House. Audley Shiplake Meadows,
Meadow Chase, Reading Road, Henley-on-Thames RG9 3JN**



Internal Measurements	Metric (m)	Imperial (ft)
Lower level		
Kitchen/Living/Dining Room	10.02 x 4.83	32'9" x 15'10"
Study/Bedroom 3	3.77 x 3.75	12'4" x 12'3"
Utility	4.24 x 4.76	13'11" x 15'7"
Upper level		
Main Bedroom	5.73 x 4.85	18'9" x 15'10"
Bedroom 2	5.73 x 5.86	18'9" x 19'2"
Dressing	3.45 x 1.93	11'4" x 6'4"
Storage	1.12 x 1.93	3'7" x 6'4"

These floor plans are illustrative and for marketing purposes only. Maximum measurements are shown with longer dimension quoted first. Dimensions are quoted for the main area of the room only. Built-in wardrobes not included in the overall room dimensions. Furniture shown to illustrate possible room layouts and not included in sale. Designs vary according to plot. All details should be checked at the Sales Office. July 2024.